

# ILS or LOC/DME RWY 12

LOC/DME I-RMT <b>110.35</b> Chan <b>40 (Y)</b>	APP CRS <b>126°</b>	Rwy Idg TDZE Apt Elev	<b>8280</b> <b>3963</b> <b>3967</b>
--	------------------------	-----------------------------	---

SCOTTSLUFF/

WESTERN NEBRASKA RGNL/WILLIAM B. HEILIG FIELD (BFF)

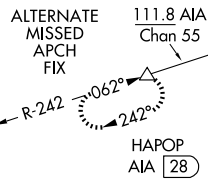
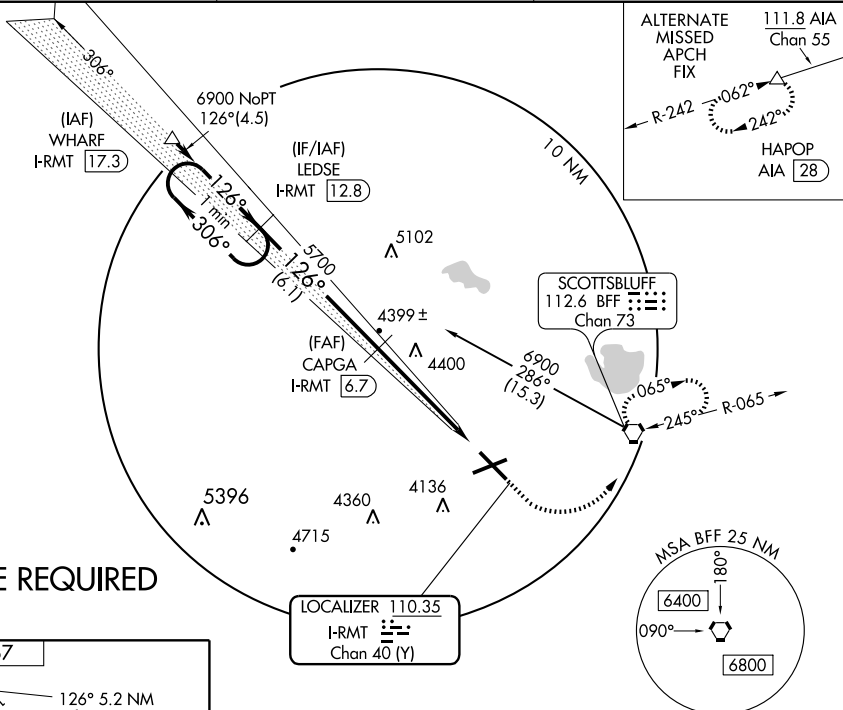
▼ When local altimeter setting not received, use Alliance altimeter setting and increase DA 91 feet; all MDAs 100 feet, and S-LOC 12 and circling Cat B/C/D visibilities ¼ mile. For inoperative MALSR, when using Alliance altimeter setting, increase S-ILS 12 visibility to 1. VDP NA when using Alliance altimeter setting.

MALSR



MISSED APPROACH: Climb to 4500 then climbing left turn to 6900 direct BFF VORTAC and hold, continue climb-in-hold to 6900.

ASOS <b>121.025</b>	DENVER CENTER <b>127.95 338.2</b>	UNICOM <b>123.0 (CTAF)</b>
------------------------	--------------------------------------	-------------------------------



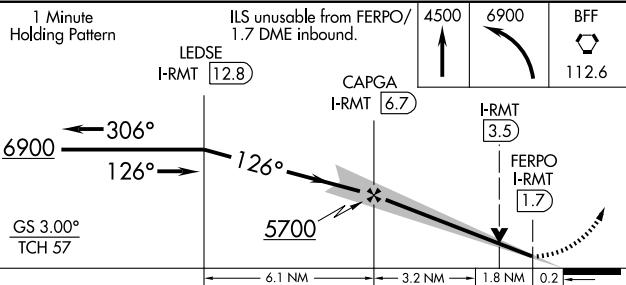
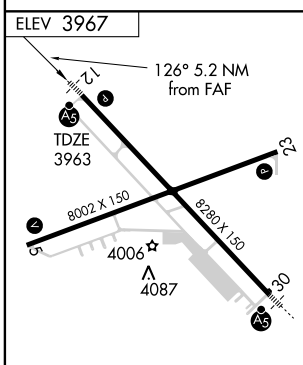
SCOTTSLUFF  
112.6 BFF  
Chan 73

LOCALIZER 110.35  
I-RMT  
Chan 40 (Y)

**DME REQUIRED**

NC-2, 22 OCT 2009 to 19 NOV 2009

NC-2, 22 OCT 2009 to 19 NOV 2009



REIL Rwy 12	HIRL Rwy 12-30	MIRL Rwy 5-23			
Knots	60	90	120	150	180
Min:Sec					

CATEGORY	A	B	C	D
S-ILS 12	4163-½ 200 (200-½)			
S-LOC 12	4640-½ 677 (700-½)	4640-1½ 677 (700-½)	4640-1¾ 677 (700-1¾)	4640-1¾ 677 (700-1¾)
CIRCLING	4640-1 673 (700-1)	4640-2 673 (700-2)	4640-2 ¼ 673 (700-2¼)	4640-2 ¼ 673 (700-2¼)