


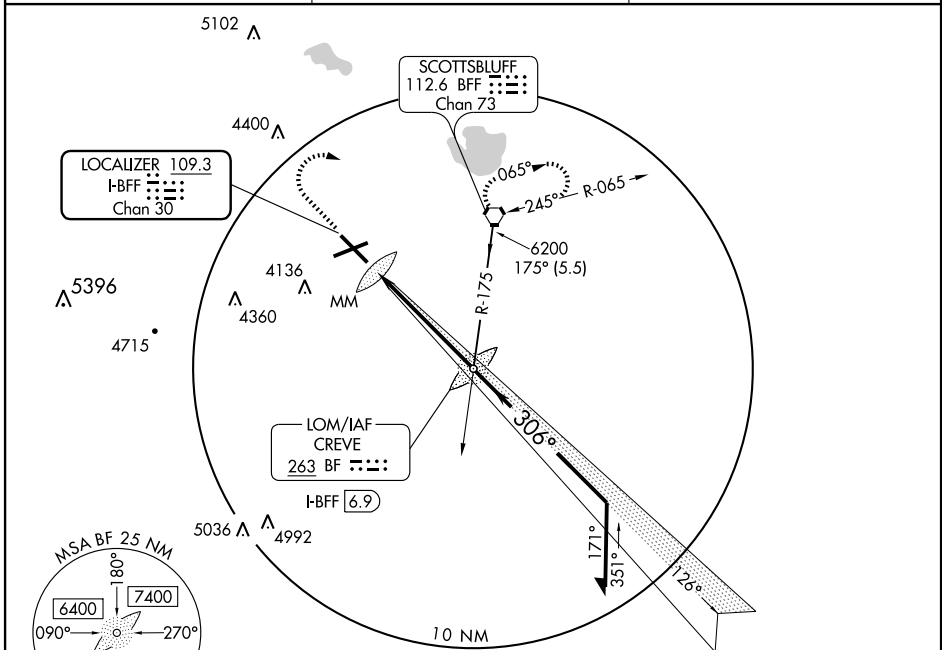
# ILS RWY 30

LOC I-BFF <b>109.3</b> Chan <b>30</b>	APP CRS <b>306°</b>	Rwy Idg <b>8280</b> TDZE <b>3950</b> Apt Elev <b>3965</b>
---	------------------------	--

SCOTTSBLUFF/  
WESTERN NEBRASKA RGNL/WILLIAM B. HEILIG FIELD (BFF)

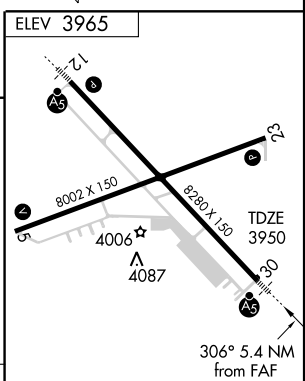
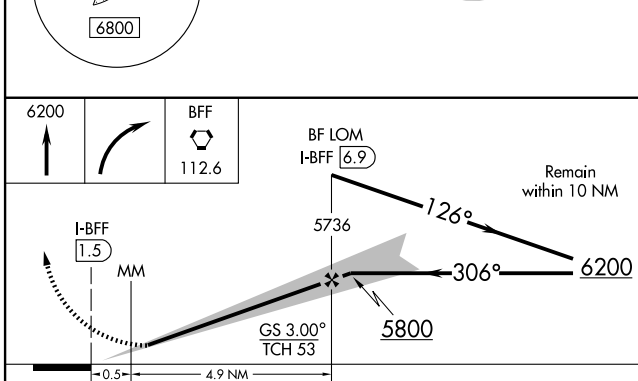
<p><b>⚠</b> Cat D S-LOC visibility increase 1/4 mile for inoperative MALSRS.</p>	<p>MALSRS  </p>	<p>MISSED APPROACH: Climb to 6200 then right turn direct BFF VORTAC and hold.</p>
--	--	---

ASOS <b>121.025</b>	DENVER CENTER <b>127.95 338.2</b>	UNICOM <b>123.0 (CTAF)</b> 
------------------------	--------------------------------------	---





NC-2, 22 OCT 2009 to 19 NOV 2009

NC-2, 22 OCT 2009 to 19 NOV 2009



CATEGORY	A	B	C	D
S-ILS 30	41 50-1/2 200 (200-1/2)			
S-LOC 30	4240-1/2 290 (300-1/2)		4240-3/4 290 (300-3/4)	
CIRCLING	4500-1	535 (600-1)	4500-1 1/2 535 (600-1 1/2)	4600-2 635 (700-2)

REIL Rwy 12	
HIRL Rwy 12-30	
MIRL Rwy 5-23	
FAF to MAP 5.4 NM	
Knots	60 90 120 150 180
Min:Sec	5:24 3:36 2:42 2:10 1:48

# ILS RWY 30