

SAVANNAH, GEORGIA

RNAV (GPS) RWY 28

WAAS CH **82111** APCH CRS **096°** Rwy Idg **11,375**
W28A TDZE **26**
 Arpt Elev **41**

AL-381 [USA]

HUNTER AAF (KSVN)

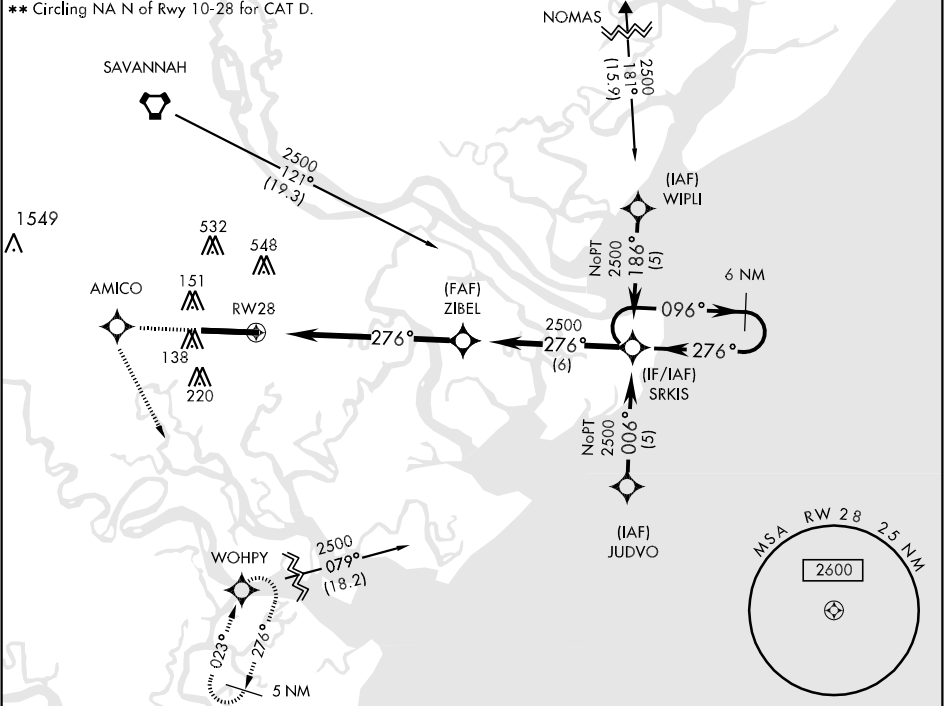
▼ For uncompensated BARO-VNAV systems, LNAV/VNAV NA below -15°C (5°F) or above 49°C (120°F)
 DME/DME RNP -0.3 NA



MISSED APPROACH: Climb to 2000 direct AMICO and via 180 track to WOHPY and hold.

ATIS 127.525 323.125	SAVANNAH APP CON 120.4 353.775	HUNTER TOWER ★ 124.975 (CTAF) 0 279.575	GND CON 121.8 291.675	ASR/PAR
--	--	---	---------------------------------	---------

** Circling NA N of Rwy 10-28 for CAT D.

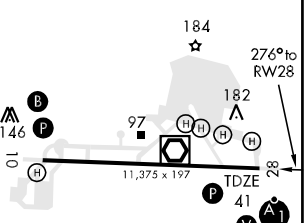
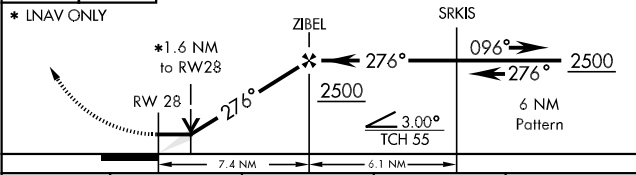


SE-4, 22 OCT 2009 to 19 NOV 2009

SE-4, 22 OCT 2009 to 19 NOV 2009

2000 ↑ AMICO

ELEV 41



CATEGORY	A	B	C	D
LPV DA		241/24	200 (200-½)	
LNAV/VNAV DA		487/50	446 (500-1)	
LNAV MDA	600/24	559 (600-½)	600/50 559 (600-1)	600/60 559 (600-1¼)
CIRCLING**	600-1	559 (600-1)	600-1½ 559 (600-1½)	600-2 559 (600-2)
S-PAR 28		241/24	200 (200-½)	GS 3.0°

REIL Rwy 10 0
 HIRL Rwy 10-28 0

SAVANNAH, GEORGIA
 Orig 09239

32°01'N-81°09'W

HUNTER AAF (KSVN)

RNAV (GPS) RWY 28