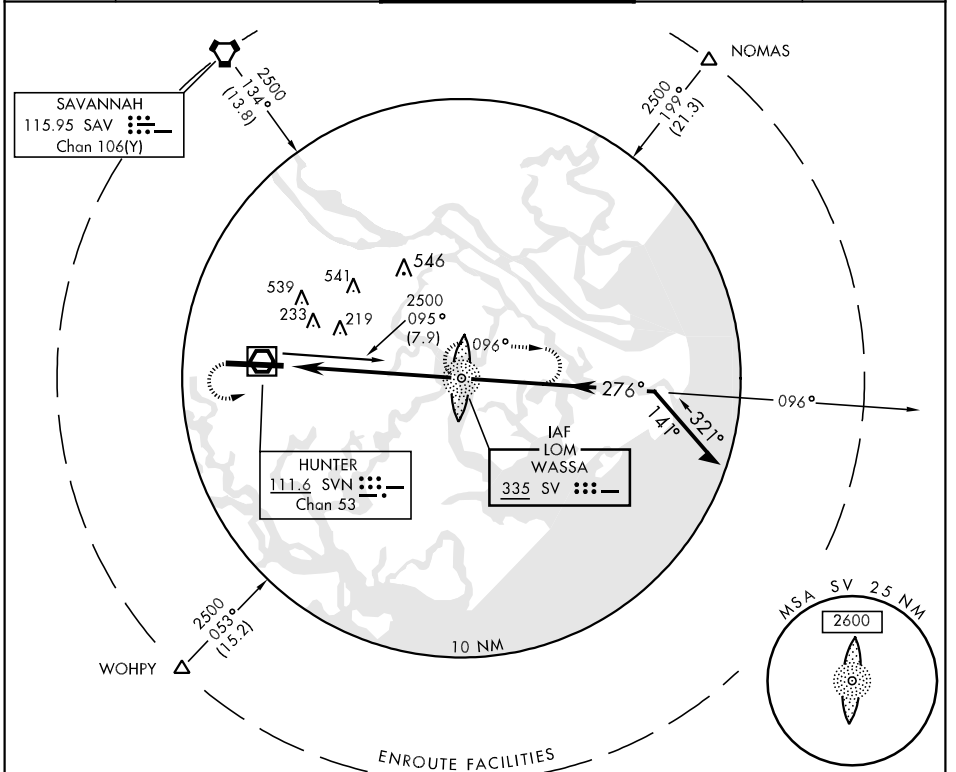


LOM SV 335	APCH CRS 276°	Rwy ldg 11,375 TDZE 41 Arpt Elev 41	AL-381 [USA]	HUNTER AAF (KSVN)
* For inop ALSF, increase CAT AB vis to RVR 50 and CAT CD to 2 miles. ** Circling NA N of Rwy 10-28 for CAT D.			ALSF-1 	MISSED APPROACH: Climb to 1500, then climbing left turn to 2500 direct SV LOM and hold.
ATIS 127.525 323.125	SAVANNAH APP CON 120.4 353.775	HUNTER TOWER * 124.975 (CTAF) 0 279.575	GND CON 121.8 291.675	ASR/PAR



SE-4, 22 OCT 2009 to 19 NOV 2009

SE-4, 22 OCT 2009 to 19 NOV 2009

1500 2500 SV 	WASSA LOM Remain within 10 NM of SV LOM 096° 2500 276° 2500 ≤ 3.15° TCH 54 7.2 NM	ELEV 41 184 182 TDZE 41 97 11,375 x 197 28 276° 7.2 NM from SV LOM REIL Rwy 10 HIRL Rwy 10-28 111																																				
<table border="1"> <thead> <tr> <th>CATEGORY</th> <th>A</th> <th>B</th> <th>C</th> <th>D</th> </tr> </thead> <tbody> <tr> <td>S-28*</td> <td>700/40 659 (700-¾)</td> <td></td> <td>700/60 659 (700-1¼)</td> <td>700-1½ 659 (700-1½)</td> </tr> <tr> <td>CIRCLING**</td> <td>700-1 659 (700-1)</td> <td></td> <td>700-¾ 659 (700-1¾)</td> <td>700-2 659 (700-2)</td> </tr> <tr> <td>S-PAR 28</td> <td colspan="4">241/24 200 (200-½) GS 3.00°</td> </tr> </tbody> </table>	CATEGORY	A	B	C	D	S-28*	700/40 659 (700-¾)		700/60 659 (700-1¼)	700-1½ 659 (700-1½)	CIRCLING**	700-1 659 (700-1)		700-¾ 659 (700-1¾)	700-2 659 (700-2)	S-PAR 28	241/24 200 (200-½) GS 3.00°				<table border="1"> <thead> <tr> <th colspan="5">FAF to MAP 7.2 NM</th> </tr> <tr> <th>Knots</th> <th>60</th> <th>90</th> <th>120</th> <th>150</th> <th>180</th> </tr> </thead> <tbody> <tr> <td>Min:Sec</td> <td>7:12</td> <td>4:48</td> <td>3:36</td> <td>2:53</td> <td>2:24</td> </tr> </tbody> </table>	FAF to MAP 7.2 NM					Knots	60	90	120	150	180	Min:Sec	7:12	4:48	3:36	2:53	2:24
CATEGORY	A	B	C	D																																		
S-28*	700/40 659 (700-¾)		700/60 659 (700-1¼)	700-1½ 659 (700-1½)																																		
CIRCLING**	700-1 659 (700-1)		700-¾ 659 (700-1¾)	700-2 659 (700-2)																																		
S-PAR 28	241/24 200 (200-½) GS 3.00°																																					
FAF to MAP 7.2 NM																																						
Knots	60	90	120	150	180																																	
Min:Sec	7:12	4:48	3:36	2:53	2:24																																	