

SAVANNAH, GEORGIA

ILS or LOC RWY 28

LOC/DME I-SVN 109.5 Chan 32	APCH CRS 276°	Rwy Idg 11,375 TDZE 41 Arpt Elev 41
---	-------------------------	--

AL-381 [USA]

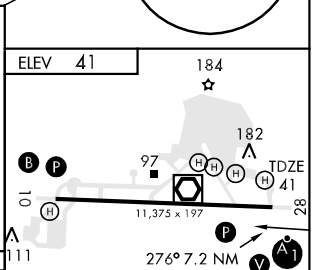
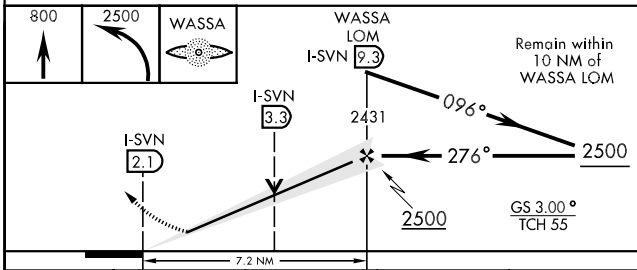
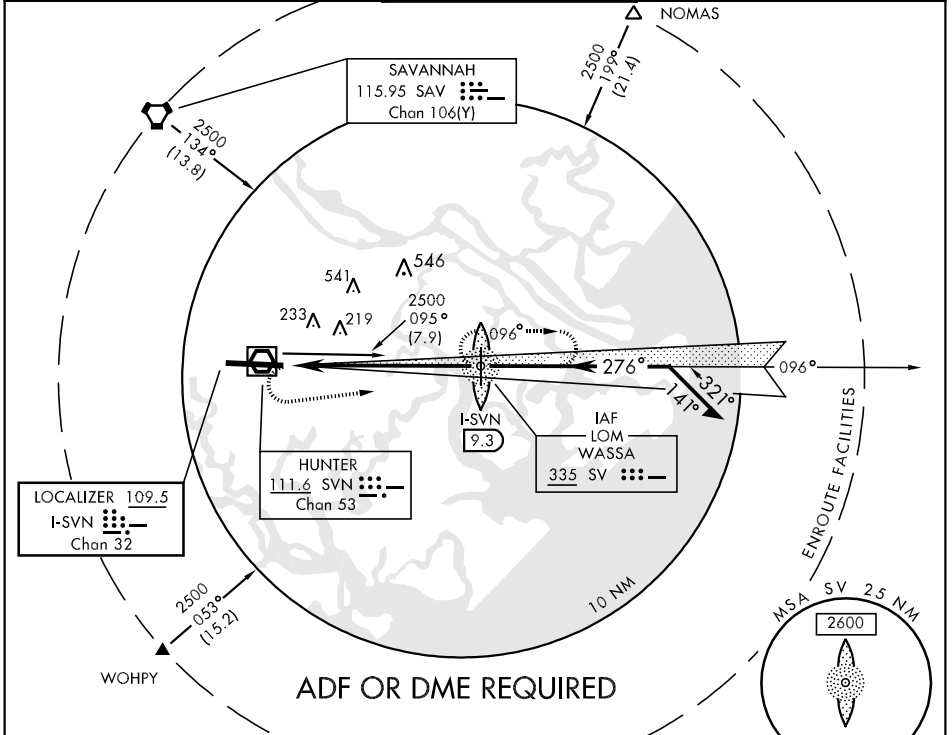
HUNTER AAF (KSVN)

▼ * Circling NA N of Rwy 10-28 for CAT D.



MISSED APPROACH: Climb to 800, then climbing left turn to 2500 direct WASSA LOM and hold.

ATIS 127.525 323.125	SAVANNAH APP CON 120.4 353.775	HUNTER TOWER ★ 124.975 (CTAF) 0 279.575	GND CON 121.8 291.675	ASR/PAR
--	--	---	---------------------------------	---------



CATEGORY	A	B	C	D
S-ILS 28	241/24		200 (200-½)	
S-LOC 28	460/24	419 (500-½)	460/40 419 (500-¾)	460/50 419 (500-1)
CIRCLING *	500-1 459 (500-1)	520-1 479 (500-1)	520-1½ 479 (500-1½)	600-2 559 (600-2)
S-PAR 28	241/24		200 (200-½)	GS 3.00°

REIL Rwy 10	
HIRL Rwy 10-28	
FAF to MAP 7.2 NM	
Knots	60 90 120 150 180
Min:Sec	7:12 4:48 3:36 2:53 2:24

SAVANNAH, GEORGIA
Amdt 3 09239

32°01'N-81°09'W

HUNTER AAF (KSVN)

ILS or LOC RWY 28

SE-4, 22 OCT 2009 to 19 NOV 2009

SE-4, 22 OCT 2009 to 19 NOV 2009