

# RNAV (GPS) RWY 10

SAVANNAH/HILTON HEAD INTL (SAV)

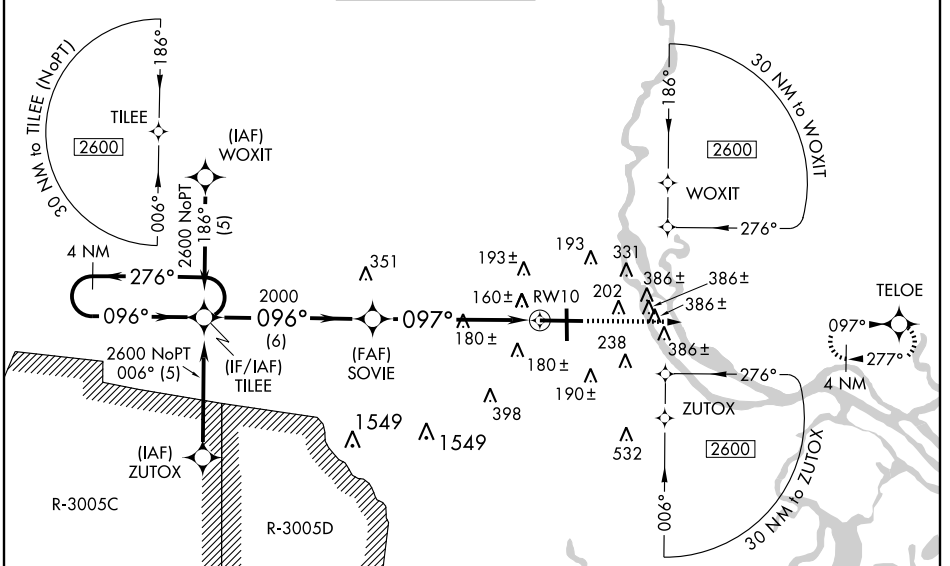
WAAS CH <b>90114</b> <b>W10A</b>	APP CRS <b>097°</b>	Rwy Idg TDZE Apt Elev	<b>9201</b> <b>30</b> <b>50</b>
--	------------------------	-----------------------------	---------------------------------------

**▼** For inoperative MALSRL, increase LNAV Cat D visibility to RVR 6000. For uncompensated Baro-VNAV systems, LNAV/VNAV NA below -1.5°C (5°F) or above 49°C (120°F).  
**▲** DME/DME RNP-0.3 NA. When local altimeter setting not received, use Hilton Head Island, SC altimeter setting and increase all DA 65 feet and all MDA 80 feet and LNAV/VNAV all Cats and Circling Cat D visibilities ¼ mile. For inoperative MALSRL when using Hilton Head Island altimeter setting, increase LPV all Cats visibility to RVR 5000. VDP and Baro-VNAV NA when using Hilton Head Island altimeter setting.

**MALSRL**

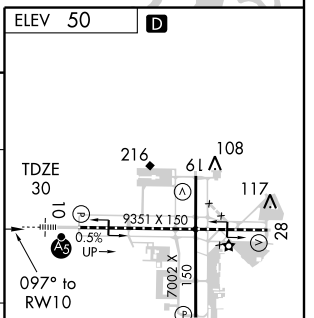
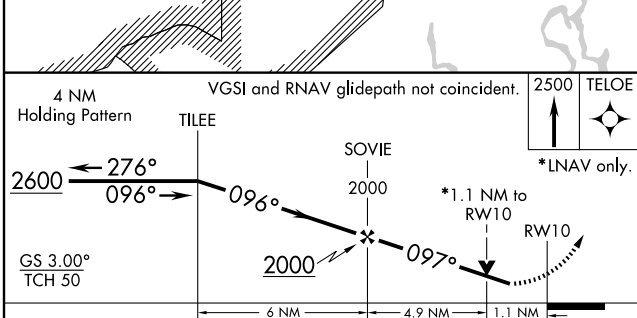
**MISSED APPROACH:**  
Climb to 2500 direct TELOE and hold.

ATIS <b>123.75</b>	SAVANNAH APP CON* <b>125.3 371.875</b>	SAVANNAH TOWER* <b>119.1 (CTAF) 257.8</b>	GND CON <b>121.9 348.6</b>	CLNC DEL <b>119.55 291.775</b>	UNICOM <b>122.95</b>
-----------------------	---	--	-------------------------------	-----------------------------------	-------------------------



SE-4, 22 OCT 2009 to 19 NOV 2009

SE-4, 22 OCT 2009 to 19 NOV 2009



CATEGORY	A	B	C	D
LPV DA		230/24	200 (200-½)	
LNAV/VNAV DA		504/60	474 (500-1½)	
LNAV MDA	440/24	410 (400-½)	440/40 410 (400-¾)	440/50 410 (400-1)
CIRCLING	520-1	470 (500-1)	520-1½ 470 (500-1½)	700-2 650 (700-2)

TDZ/CL Rwy 10  
REIL Rwy 19  
REIL Rwy 28  
HIRL Rws 1-19 and 10-28