

# RNAV (GPS) RWY 1

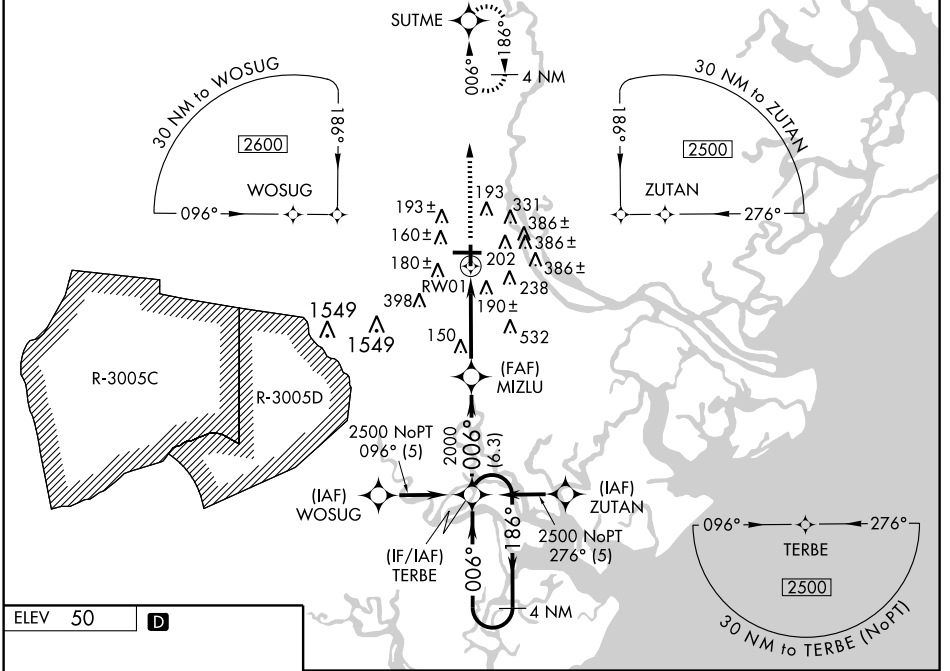
SAVANNAH/HILTON HEAD INTL (SAV)

WAAS CH <b>45515</b> W01A	APP CRS <b>006°</b>	Rwy Idg <b>7002</b> TDZE <b>39</b> Apt Elev <b>50</b>
---------------------------------	------------------------	---

**▼** For uncompensated Baro-VNAV systems, LNAV/VNAV NA below -1.5°C (5°F) or above 49°C (120°F). DME/DME RNP-0.3 NA. When local altimeter setting not received, use Hilton Head Island, SC altimeter setting and increase all LPV DA 65 feet, LNAV/VNAV DA 126 feet, all MDA 80 feet and LPV all Cats, LNAV Cats C/D and Circling Cat D visibilities ¼ mile and LNAV/VNAV all Cats visibility ½ mile. VDP and Baro-VNAV NA when using Hilton Head Island altimeter setting.

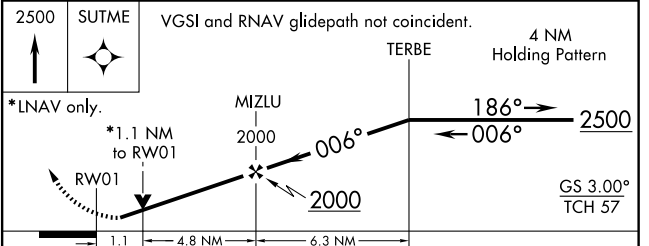
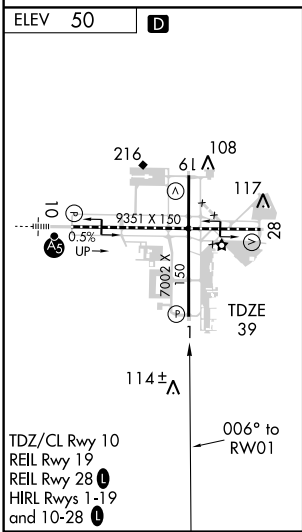
MISSED APPROACH: Climb to 2500 direct SUTME and hold.

ATIS <b>123.75</b>	SAVANNAH APP CON* <b>120.4 353.775</b>	SAVANNAH TOWER* <b>119.1(CTAF) 0 257.8</b>	GND CON <b>121.9 348.6</b>	CLNC DEL <b>119.55 291.775</b>	UNICOM <b>122.95</b>
-----------------------	---	---	-------------------------------	-----------------------------------	-------------------------



SE-4, 22 OCT 2009 to 19 NOV 2009

SE-4, 22 OCT 2009 to 19 NOV 2009



CATEGORY	A	B	C	D
LPV DA	239/40		200 (200-¾)	
LNAV/VNAV DA	384/60		345 (400-1¼)	
LNAV MDA	460/50	421 (500-1)	460/60	421 (500-1¼)
CIRCLING	520-1	470 (500-1)	520-1½ 470 (500-1½)	700-2 650 (700-2)