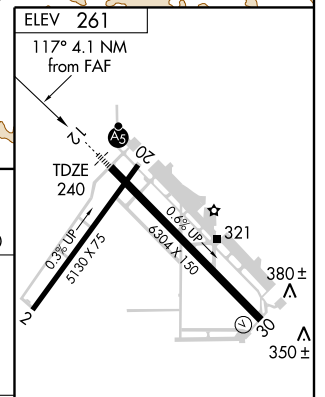
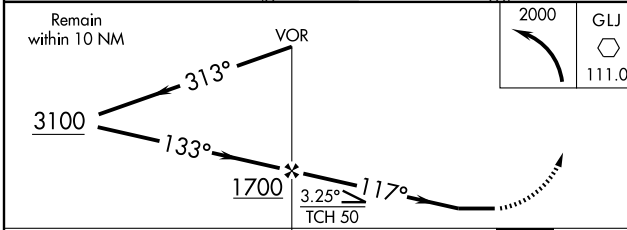
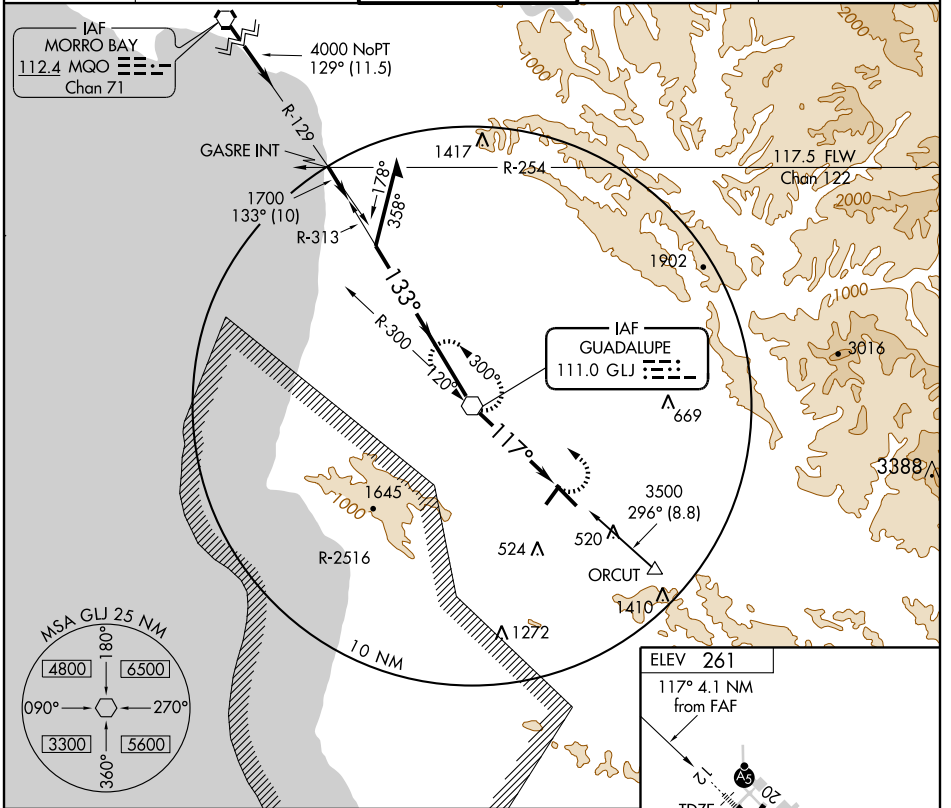


# VOR RWY 12

VOR GLJ <b>111.0</b>	APP CRS <b>117°</b>	Rwy Idg TDZE Apt Elev	<b>6304</b> <b>240</b> <b>261</b>
-------------------------	------------------------	-----------------------------	---

SANTA MARIA PUBLIC/CAPTAIN G. ALLAN HANCOCK FIELD (SMX)

		MISSED APPROACH: Climbing left turn to 2000 direct GLJ VOR and hold.		
		ATIS <b>121.15</b>	SANTA BARBARA APP CON* <b>124.15 327.8</b>	SANTA MARIA TOWER* <b>118.3 (CTAF) 289.6</b>



CATEGORY	A	B	C	D
S-12	680/24 440 (500-½)		680/40 440 (500-¾)	680/50 440 (500-1)
CIRCLING	820-1 559 (600-1)		860-1 ¼ 599 (600-1¾)	1320-3 1059 (1100-3)

# VOR RWY 12

SW-3, 22 OCT 2009 to 19 NOV 2009

SW-3, 22 OCT 2009 to 19 NOV 2009