

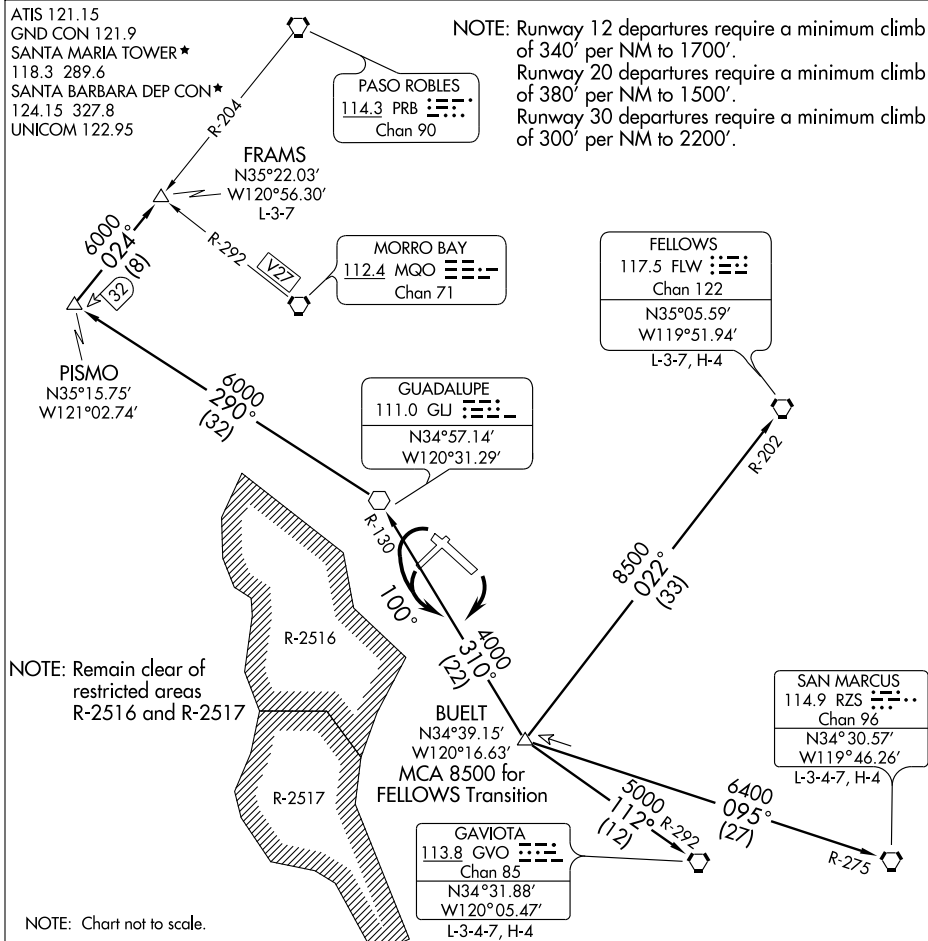
(BUELT1.BUFLT) 07298

SANTA MARIA PUBLIC/CAPTAIN G. ALLAN HANCOCK FIELD (SMX)
SL-379 (FAA) SANTA MARIA, CALIFORNIA

BUFLT ONE DEPARTURE

ATIS 121.15
GND CON 121.9
SANTA MARIA TOWER *
118.3 289.6
SANTA BARBARA DEP CON *
124.15 327.8
UNICOM 122.95

NOTE: Runway 12 departures require a minimum climb of 340' per NM to 1700'.
Runway 20 departures require a minimum climb of 380' per NM to 1500'.
Runway 30 departures require a minimum climb of 300' per NM to 2200'.



NOTE: Remain clear of restricted areas R-2516 and R-2517

NOTE: Chart not to scale.

DEPARTURE ROUTE DESCRIPTION

TAKE-OFF RUNWAY 12: Climbing right turn to intercept and proceed via GLJ R-130 to BUFLT INT, thence via (assigned route) or (transition).

TAKE-OFF RUNWAYS 20 and 30: Climbing left turn via heading 100° to intercept and proceed via GLJ R-130 to BUFLT INT, thence via (assigned route) or (transition).

FELLOWS TRANSITION (BUFLT1.FLW): From over BUFLT INT via FLW R-202 to FLW VORTAC.

FRAMS TRANSITION (BUFLT1.FRAMS): From over BUFLT INT via GLJ R-130 to GLJ VOR, thence via GLJ R-290 to PISMO INT, thence via PRB R-204 to FRAMS INT.

GAVIOTA TRANSITION (BUFLT1.GVO): From over BUFLT INT via GVO R-292 to GVO VORTAC.

SAN MARCUS TRANSITION (BUFLT1.RZS): From over BUFLT INT via RZS R-275 to RZS VORTAC.

BUFLT ONE DEPARTURE

SANTA MARIA, CALIFORNIA
SANTA MARIA PUBLIC/CAPTAIN G. ALLAN HANCOCK FIELD (SMX)

(BUFLT1.BUFLT) 07298

SW-3, 22 OCT 2009 to 19 NOV 2009

SW-3, 22 OCT 2009 to 19 NOV 2009