

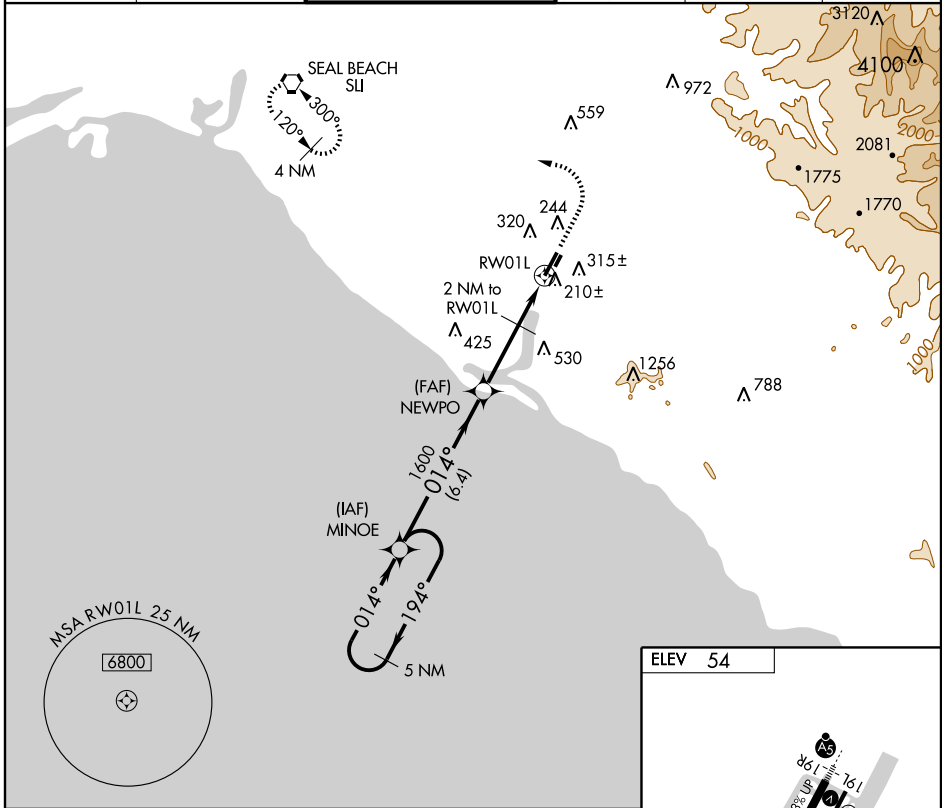
RNAV (GPS) RWY 1L

SANTA ANA/JOHN WAYNE AIRPORT-ORANGE COUNTY (SNA)

APP CRS 014°	Rwy Idg 5701
	TDZE 54
	Apt Elev 54

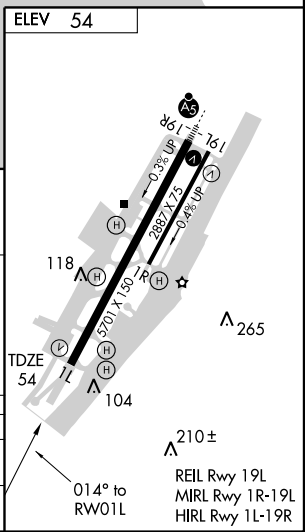
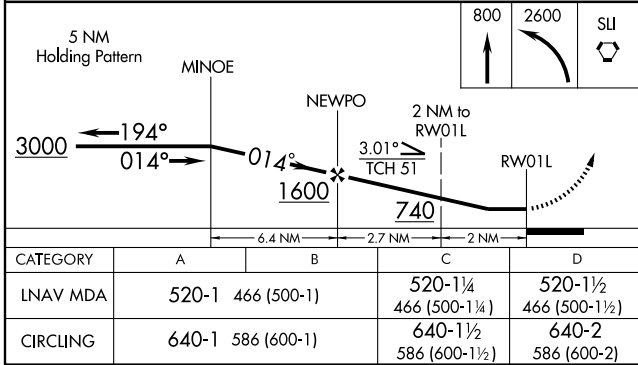
▽ GPS or RNP-0.3 required. DME/DME RNP-0.3 NA. **MISSED APPROACH:** Climb to 800 then climbing left turn to 2600 direct SLI VORTAC and hold.

ATIS 126.0	SOCAL APP CON 121.3 263.1	JOHN WAYNE TOWER * 126.8 (CTAF) 0 379.9	GND CON (EAST) 120.8 (WEST) 132.25	CLNC DEL 118.0 121.85	UNICOM 122.95
----------------------	-------------------------------------	---	--	---------------------------------	-------------------------



SW-3, 22 OCT 2009 to 19 NOV 2009

SW-3, 22 OCT 2009 to 19 NOV 2009



RNAV (GPS) RWY 1L