

SANTA ANA, CALIFORNIA

AL-377 (FAA)

# RNAV (GPS) RWY 19R

SANTA ANA/JOHN WAYNE AIRPORT-ORANGE COUNTY (SNA)

WAAS CH <b>99502</b> <b>W19A</b>	APP CRS <b>194°</b>	Rwy Idg TDZE <b>55</b> Apt Elev <b>56</b>	<b>5701</b>
--	------------------------	---	-------------

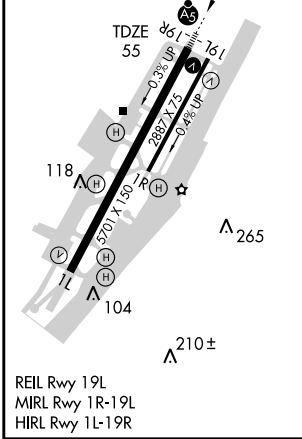
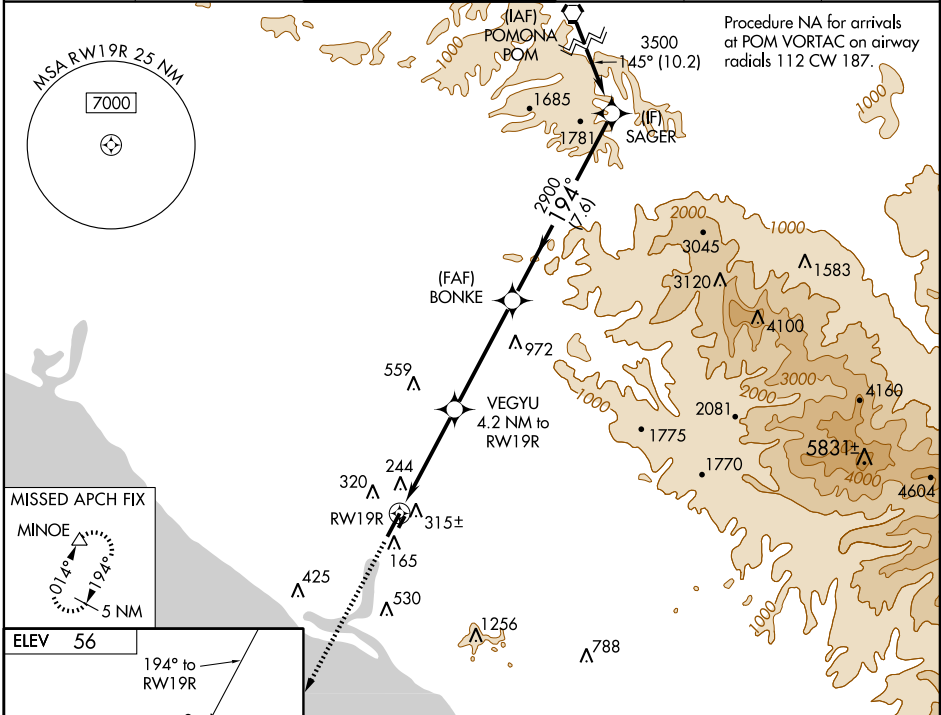
**▼** For inoperative MALS, increase LPV all Cats visibility to RVR 5000.  
For uncompensated Baro-VNAV systems, LNAV/VNAV NA below -15°C (5°F) or above 49°C (121°F).  
DME/DME RNP-0.3 NA.

**MALSR**



**MISSED APPROACH:** Climb to 3000 direct MINOE and hold.

ATIS <b>126.0</b>	SOCAL APP CON <b>121.3 263.1</b>	<b>JOHN WAYNE TOWER *</b> <b>126.8 (CTAF) 0 379.9</b>	GND CON (EAST) <b>120.8</b> (WEST) <b>132.25</b>	CLNC DEL <b>118.0 121.85</b>	UNICOM <b>122.95</b>
----------------------	-------------------------------------	--	---	---------------------------------	-------------------------



3000	MINOE	*LNAV only	SAGER	
↑	△		Procedure Turn NA	3500
		*1.7 NM to RWY 19R	VEGYU 4.2 NM to RWY 19R	BONKE
		1.7	2.5	4.4
		1420*	194°	2900
				GS 3.00 TCH 50

CATEGORY	A	B	C	D
LPV DA		338/24	283 (300-½)	
LNAV/VNAV DA		683/1¾	628 (700-1¾)	
LNAV MDA	620/24	565 (600-½)	620/50 565 (600-1)	620/60 565 (600-1½)
CIRCLING	640-1	584 (600-1)	640-1½ 584 (600-1½)	640-2 584 (600-2)

SANTA ANA, CALIFORNIA  
Amdt 1A 09127

SANTA ANA/JOHN WAYNE AIRPORT-ORANGE COUNTY (SNA)  
33°41'N-117°52'W

# RNAV (GPS) RWY 19R

SW-3, 22 OCT 2009 to 19 NOV 2009

SW-3, 22 OCT 2009 to 19 NOV 2009