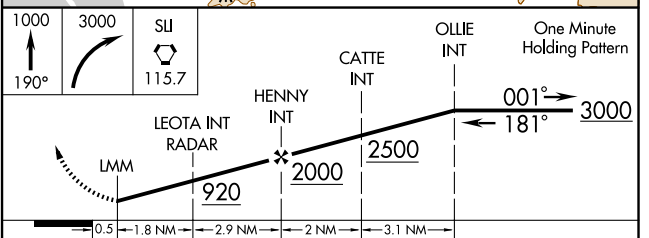
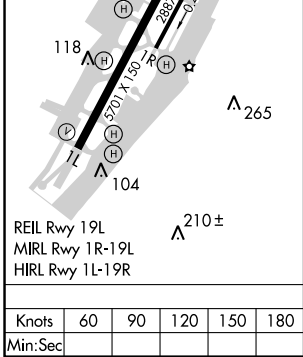
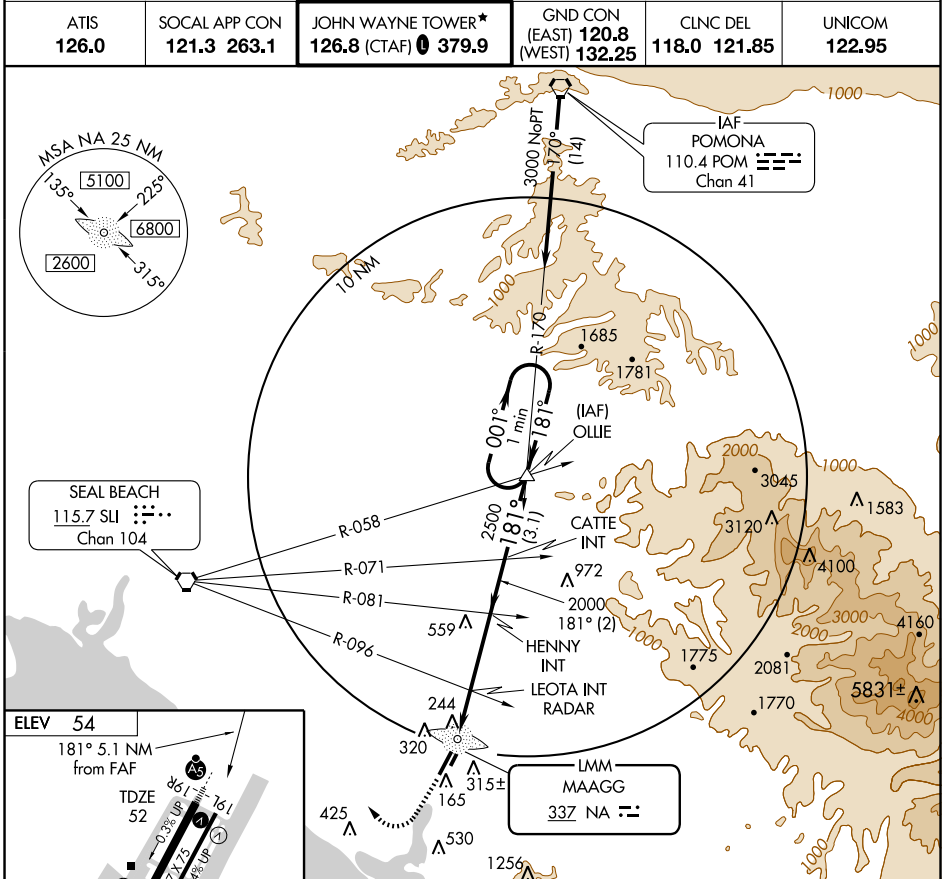


NDB RWY 19R

SANTA ANA/ JOHN WAYNE AIRPORT-ORANGE COUNTY (SNA)

LMM NA 337	APP CRS 181°	Rwy Idg TDZE Apt Elev	5701 52 54
----------------------	------------------------	-----------------------------	---------------------------------------

		MISSED APPROACH: Climb to 1000 via heading 190°, then climbing right turn to 3000 direct SLI VORTAC.			
		ATIS 126.0	SOCAL APP CON 121.3 263.1	JOHN WAYNE TOWER* 126.8 (CTAF) 0 379.9	GND CON (EAST) 120.8 (WEST) 132.25



CATEGORY	A	B	C	D
S-19R	640/40 588 (600-¾)	640/50 588 (600-1)	640-1½ 588 (600-1½)	640-1½ 588 (600-1½)
CIRCLING	640-1 586 (600-1)	640-1½ 586 (600-1½)	640-2 586 (600-2)	640-2 586 (600-2)

NDB RWY 19R

SW-3, 22 OCT 2009 to 19 NOV 2009

SW-3, 22 OCT 2009 to 19 NOV 2009