

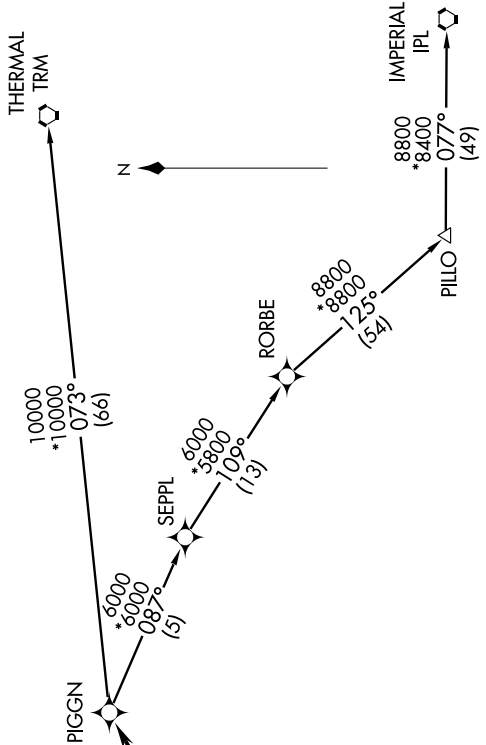
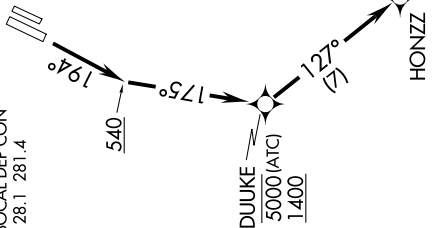
6025 10/11/19 19 NOV 2009 19

DEPARTURE ROUTE DESCRIPTION

TAKE-OFF RUNWAY 19R: Climb heading 194° to at or above 540, then intercept 175° course to DUUKE, then via depicted route to PIGGN, thence via (transition). Maintain assigned altitude, expected filed altitude 10 minutes after departure.

IMPERIAL TRANSITION (DUUKE1.IPL)
THERMAL TRANSITION (DUUKE1.TRM)

- ATIS 126.0
CLNC DEL 118.0
GND CON 120.8 (EAST)
SOCAL DEP CON 128.1 281.4



- NOTE: Chart not to scale.
NOTE: DME/DME/IRU or GPS required.
NOTE: RNAV 1.
NOTE: RADAR required.
NOTE: Turbojet and turboprop aircraft only.
NOTE: Aircraft may be vectored to DANAH or PIGGN.

TAKE-OFF OBSTACLE NOTES

RWY 19R: Windsock on hangar 536' from DER, 605' left of centerline, 44' AGL/92' MSL.
Multiple trees beginning 289' from DER, 500' right of centerline, up to 52' AGL/108' MSL.
Light poles beginning 204' from DER, 490' right of centerline, up to 35' AGL/85' MSL.
Tree 1574' from DER, 765' left of centerline, 59' feet AGL/113' MSL.

TAKE-OFF MINIMUMS

Rwys 1L/R and 19L: NA - ATC.
Rwy 19R: Standard, ATC climb of 365' per NM to 540.