

ANAHEIM THREE DEPARTURE

6002 SW-3, 22 OCT 2009 to 19 NOV 2009

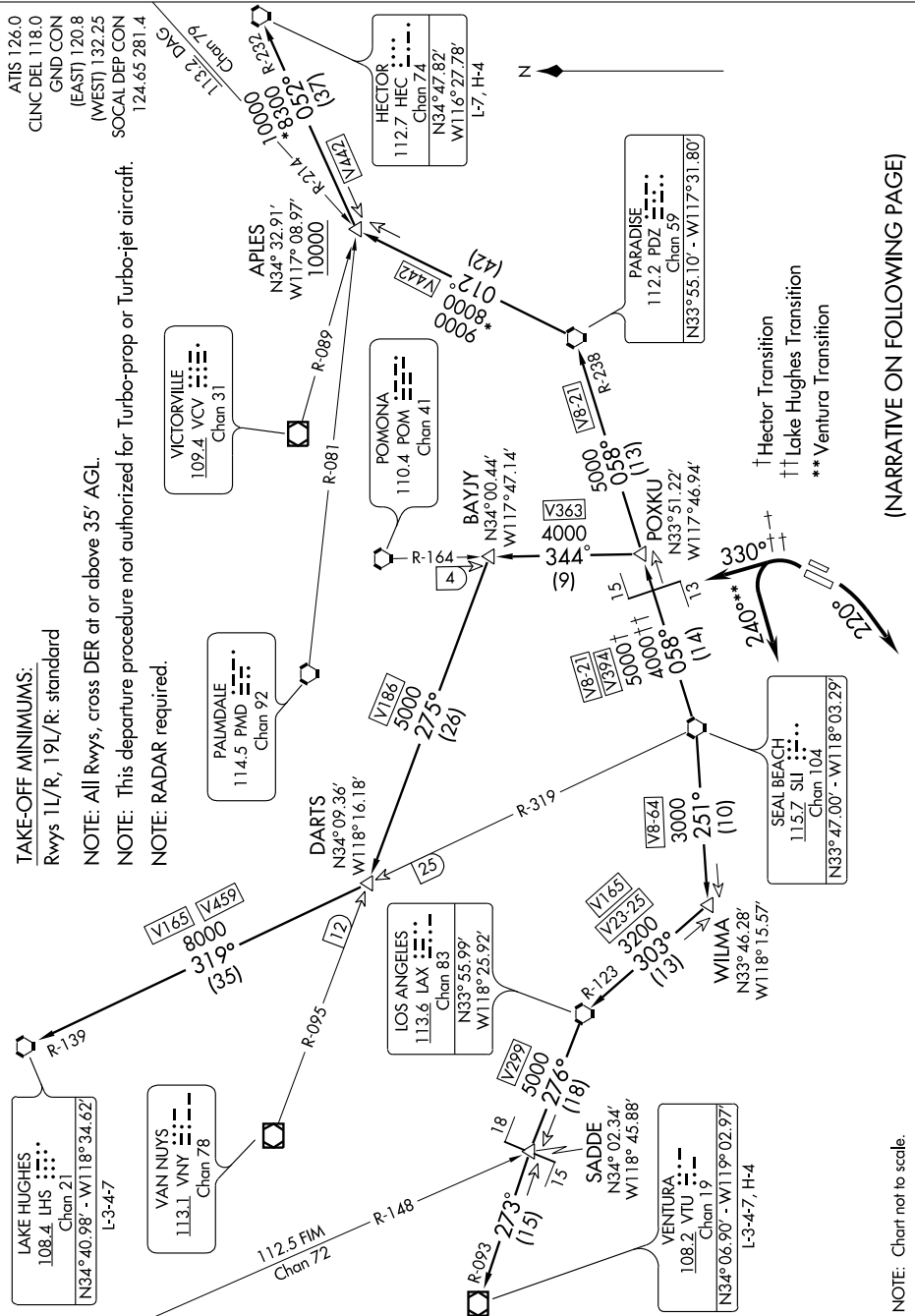
TAKE-OFF MINIMUMS:

Rwys 1L/R, 19L/R: standard

NOTE: All Rwys, cross DER at or above 35' AGL

NOTE: This departure procedure not authorized for Turbo-prop or Turbo-jet aircraft.

NOTE: RADAR required.



(NARRATIVE ON FOLLOWING PAGE)

SW-3, 22 OCT 2009 to 19 NOV 2009

ANAHEIM THREE DEPARTURE

NOTE: Chart not to scale.