

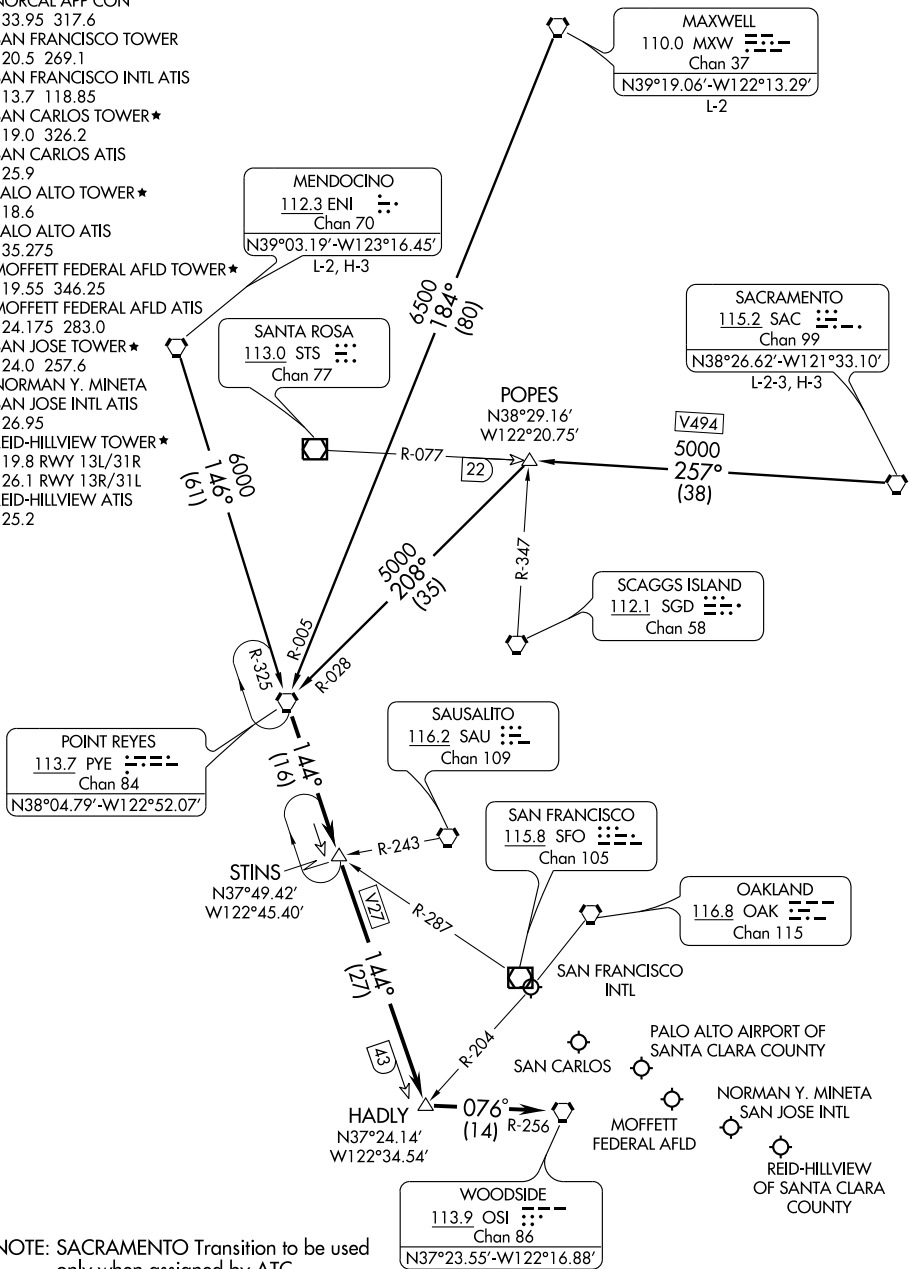
(PYE.PYE1) 09127

# POINT REYES ONE ARRIVAL

ST-375 (FAA)

SAN FRANCISCO, CALIFORNIA

NORCAL APP CON  
 133.95 317.6  
 SAN FRANCISCO TOWER  
 120.5 269.1  
 SAN FRANCISCO INTL ATIS  
 113.7 118.85  
 SAN CARLOS TOWER★  
 119.0 326.2  
 SAN CARLOS ATIS  
 125.9  
 PALO ALTO TOWER★  
 118.6  
 PALO ALTO ATIS  
 135.275  
 MOFFETT FEDERAL AFLD TOWER★  
 119.55 346.25  
 MOFFETT FEDERAL AFLD ATIS  
 124.175 283.0  
 SAN JOSE TOWER★  
 124.0 257.6  
 NORMAN Y. MINETA  
 SAN JOSE INTL ATIS  
 126.95  
 REID-HILLVIEW TOWER★  
 119.8 RWY 13L/31R  
 126.1 RWY 13R/31L  
 REID-HILLVIEW ATIS  
 125.2



NOTE: SACRAMENTO Transition to be used only when assigned by ATC.

NOTE: Chart not to scale.

(NARRATIVE ON FOLLOWING PAGE)

SW-2, 22 OCT 2009 to 19 NOV 2009

SW-2, 22 OCT 2009 to 19 NOV 2009

# POINT REYES ONE ARRIVAL

(PYE.PYE1) 09127

SAN FRANCISCO, CALIFORNIA