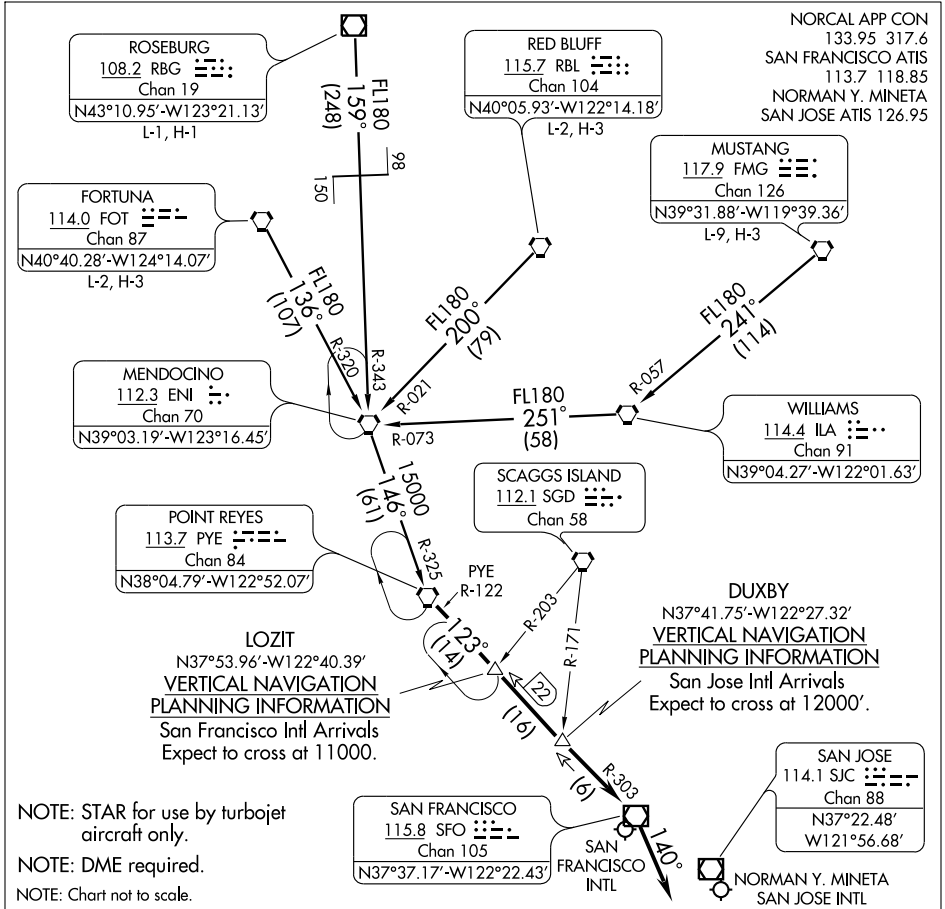


# GOLDEN GATE FIVE ARRIVAL

ST-375 (FAA)

SAN FRANCISCO, CALIFORNIA



SW-2, 22 OCT 2009 to 19 NOV 2009

SW-2, 22 OCT 2009 to 19 NOV 2009

**FORTUNA TRANSITION (FOT.GOLDN5):** From over FOT VORTAC via FOT R-136 and ENI R-320 to ENI VORTAC, then via ENI R-146 and PYE R-325 to PYE VORTAC. Thence....

**MUSTANG TRANSITION (FMG.GOLDN5):** From over FMG VORTAC via FMG R-241 and ILA R-057 to ILA VORTAC, then via ILA R-251 and ENI R-073 to ENI VORTAC, then via ENI R-146 and PYE R-325 to PYE VORTAC. Thence....

**RED BLUFF TRANSITION (RBL.GOLDN5):** From over RBL VORTAC via RBL R-200 and ENI R-021 to ENI VORTAC, then via ENI R-146 and PYE R-325 to PYE VORTAC. Thence....

**ROSEBURG TRANSITION (RBG.GOLDN5):** From over RBG VOR/DME via RBG R-159 and ENI R-343 to ENI VORTAC, then via ENI R-146 and PYE R-325 to PYE VORTAC. Thence....

....From over PYE VORTAC via SFO R-303 to SFO VOR/DME, then via heading 140° (MEA 6000). Expect vectors to final approach course.

**LOST COMMUNICATIONS:** San Jose Intl: After SFO VOR/DME proceed direct SJC VOR/DME. (MEA 6000).

# GOLDEN GATE FIVE ARRIVAL

SAN FRANCISCO, CALIFORNIA