

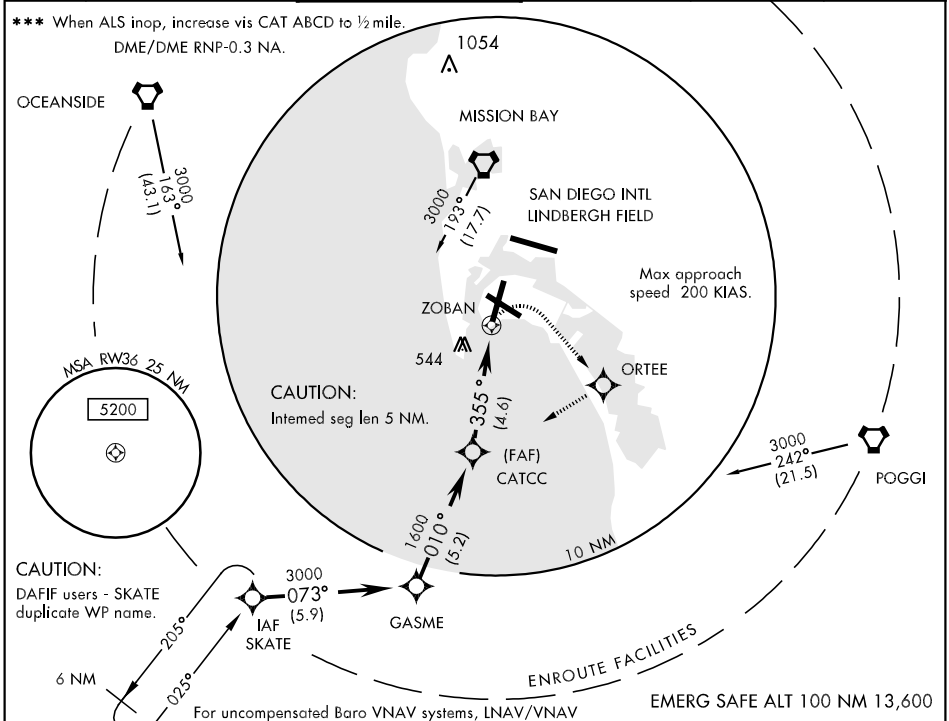
| | | |
|----------|-----------|------|
| APCH CRS | Rwy ldg | 8000 |
| 355° | TDZE | 19 |
| | Arpt Elev | 26 |

AL-374 [USN]

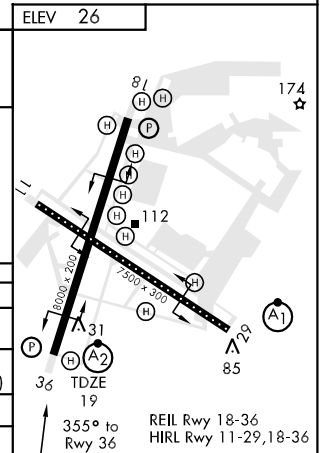
NORTH ISLAND NAS (HALSEY FIELD) (KNZY)

| | | |
|--|--------------|--|
| <p>▼ ** When ALS inop, increase vis CAT ABCD to 1 ¼ miles.</p> <p>** When ALS inop, increase vis CAT AB to 1 mile, CAT C to 1 ¼ miles, CAT D to 1 ½ miles.</p> | <p>SALSF</p> | <p>MISSED APPROACH: Climbing right turn to 2000 direct ORTEE, then turn right with track 226° to SKATE and hold.</p> |
| | | |

| | | | | | |
|--------|---------------|----------------------|--------------|--------------|---------|
| ATIS ★ | SOCAL APP CON | NORTH ISLAND TOWER ★ | GND CON | CLNC DEL | PAR/ASR |
| 317.8 | 125.15 317.55 | 135.1 336.4 | 118.0 363.25 | 128.4 288.25 | |



| | | | | |
|----------------|-------------------|-------------|-------------------|---------------------|
| | † LNAV only | | | |
| | SKATE | GASME | 2000 | ORTEE |
| | | | | SKATE |
| | 3000 | 073° | 3000 | 010° |
| | | | | CATCC |
| | | | | 1600 |
| | | | | 355° |
| | | | | ZOBAN |
| | | | | 4.6 NM |
| | | | | 2 NM |
| | | | | † 1.2 NM from RW36 |
| CATEGORY | A | B | C | D |
| LNAV/VNAV DA * | 380-1 361 (400-1) | | | |
| LNAV MDA ** | 460-¾ | 441 (500-¾) | 460-1 441 (500-1) | 460-1¼ 441 (500-1¼) |
| CIRCLING | NOT AUTHORIZED | | | |
| S-PAR 36 *** | 119-¼ | 100 | (100-¼) | GS 3.00° |



SW-3, 22 OCT 2009 to 19 NOV 2009

SW-3, 22 OCT 2009 to 19 NOV 2009