

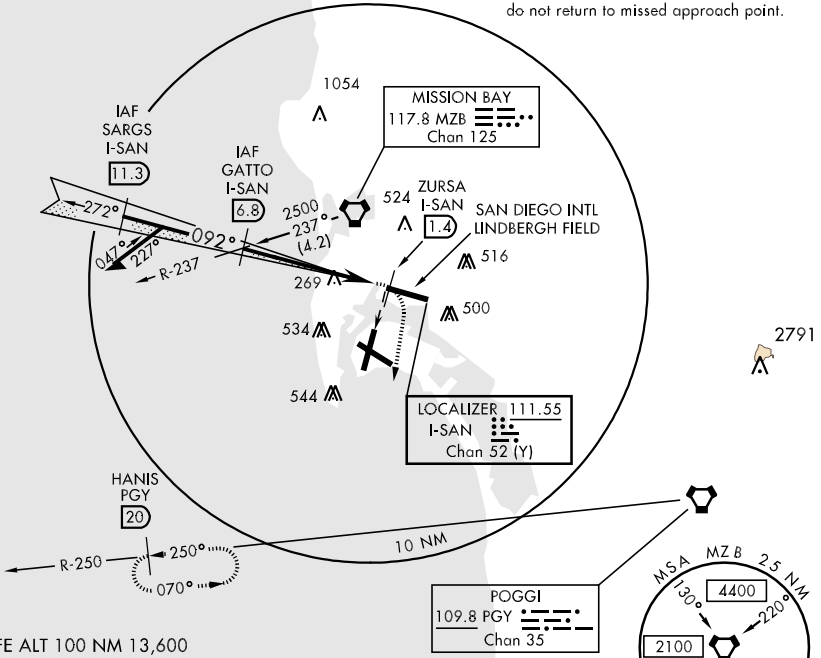
LOC I-SAN <b>111.55</b> Chan <b>52 (Y)</b>	APCH CRS <b>092°</b>	Rwy Idg TDZE N/A Arpt Elev <b>26</b>	AL-374 [USN]	NORTH ISLAND NAS (HALSEY FIELD) (KNZY)
--	-------------------------	---	--------------	--

▼ \* CAUTION: Maneuvering for circling approach not authorized W of Rwy 18-36 centerline. Approach authorized for Rwy 18 or left downwind approach to Rwy 29 after flying down Rwy 18.

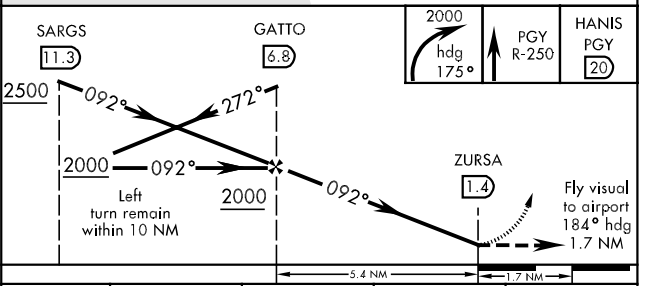
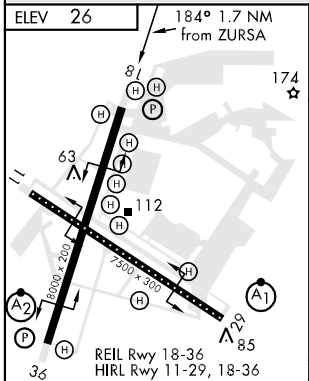
MISSED APPROACH: Climb and maintain 2000 via hdg 175°, intercept PGY VORTAC R-250 to HANIS and hold.

ATIS ★ <b>317.8</b>	SOCAL APP CON <b>125.15 317.55</b>	NORTH ISLAND TOWER ★ <b>135.1 336.4</b>	LINDBERGH TOWER <b>118.3 270.9</b>	GND CON <b>118.0 363.25</b>	CLNC DEL <b>128.4 288.25</b>	PAR/ASR
------------------------	---------------------------------------	--	---------------------------------------	--------------------------------	---------------------------------	---------

CAUTION: Aircraft executing missed approach after beginning circling maneuver do not return to missed approach point.



EMERG SAFE ALT 100 NM 13,600



FAF to MAP 5.4 NM								
Knots	60	90	120	150	180			
Min:Sec	5:24	3:36	2:49	2:14	1:52			
CATEGORY	A		B		C		D	
CIRCLING *	860-2		834 (900-2)		860-2½		834 (900-2½)	
					834 (900-2½)		834 (900-2¾)	

SW-3, 22 OCT 2009 to 19 NOV 2009

SW-3, 22 OCT 2009 to 19 NOV 2009