

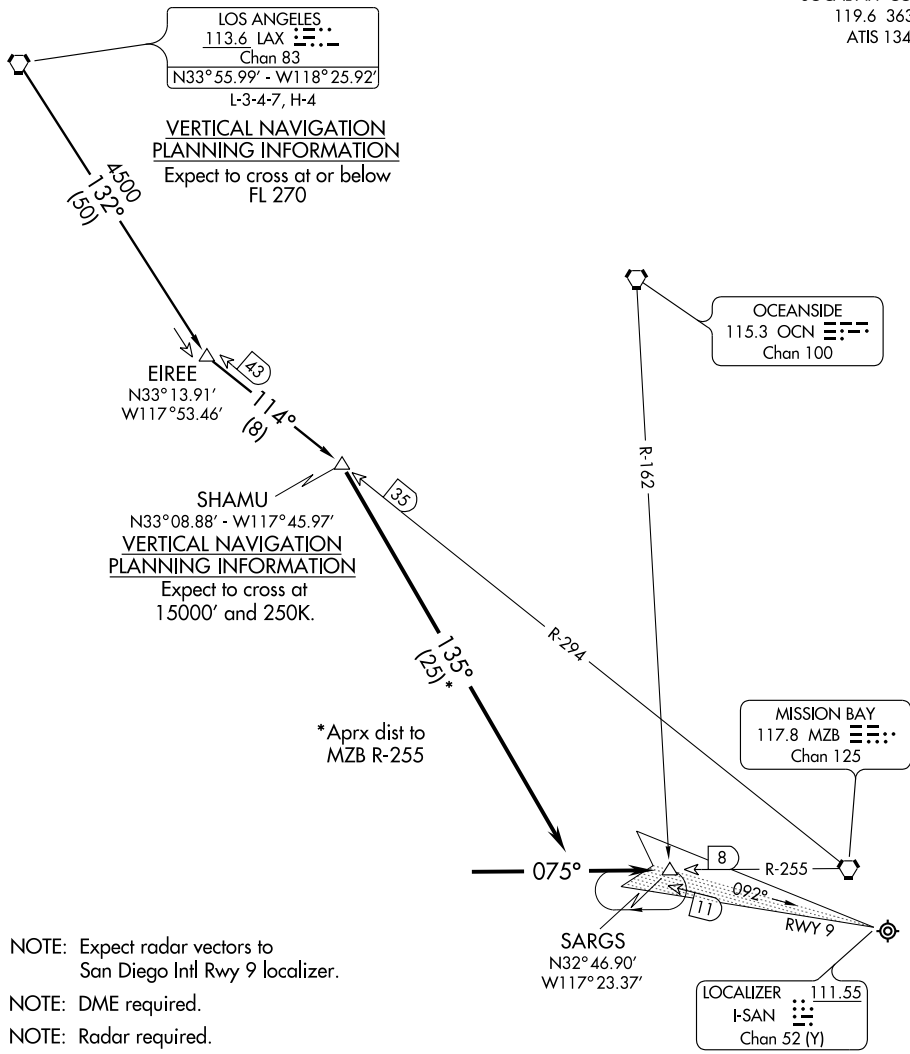
(SHAMU.SHAMU1) 09127

# SHAMU ONE ARRIVAL

ST-373 (FAA)

SAN DIEGO INTL  
SAN DIEGO, CALIFORNIA

SOCAL APP CON  
119.6 363.1  
ATIS 134.8



SW-3, 22 OCT 2009 to 19 NOV 2009

SW-3, 22 OCT 2009 to 19 NOV 2009

NOTE: Expect radar vectors to San Diego Intl Rwy 9 localizer.

NOTE: DME required.

NOTE: Radar required.

NOTE: Chart not to scale.

LOS ANGELES TRANSITION (LAX.SHAMU1): From over LAX VORTAC via LAX R-132 and MZB R-294 to SHAMU FIX. Thence....

....From over SHAMU FIX via heading 135° to intercept MZB R-255 then via MZB R-255 to SARGS INT. Expect radar vectors to SAN Rwy 9 localizer.

# SHAMU ONE ARRIVAL

(SHAMU.SHAMU1) 09127

SAN DIEGO, CALIFORNIA  
SAN DIEGO INTL