

SAN DIEGO, CALIFORNIA

AL-373 (FAA)

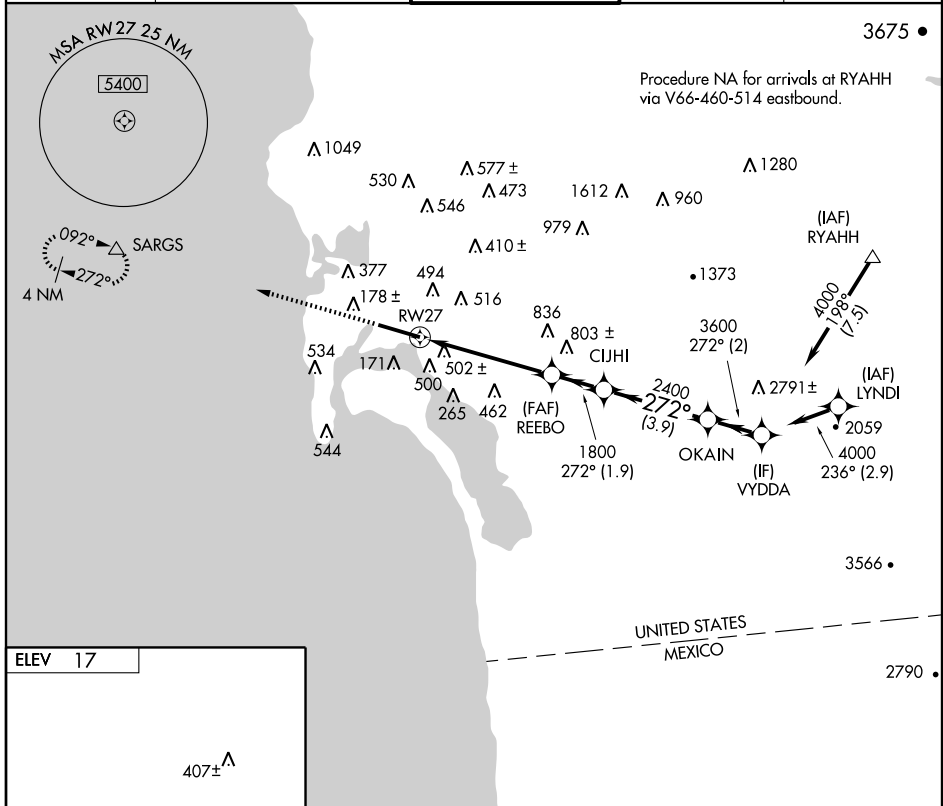
# RNAV (GPS) RWY 27

SAN DIEGO INTL (SAN)

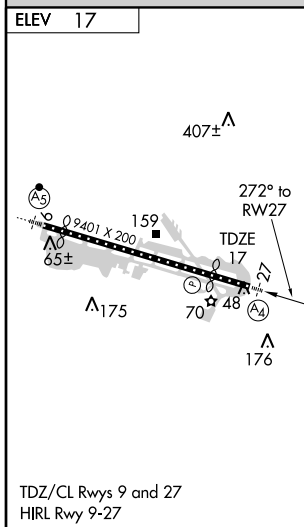
APP CRS	Rwy Idg	<b>7591</b>
<b>272°</b>	TDZE	<b>17</b>
	Apt Elev	<b>17</b>

<p><b>▽</b> Inoperative table does not apply.  <b>△</b> NA Visibility reduction by helicopters NA.          DME/DME RNP-0.3 NA.</p>	<p>MALS  </p>	<p>MISSED APPROACH: Climb to 2500 direct SARGs and hold.</p>
---	-------------------	--

<p>ATIS  <b>134.8</b></p>	<p>SOCAL APP CON  <b>119.6 363.1</b> WEST  <b>124.35 279.625</b> EAST</p>	<p>LINDBERGH TOWER  <b>118.3 338.225</b></p>	<p>GND CON  <b>123.9</b></p>	<p>CLNC DEL  <b>125.9</b></p>
-------------------------------	---	--	----------------------------------	-----------------------------------



SW-3, 22 OCT 2009 to 19 NOV 2009



SAN DIEGO, CALIFORNIA  
 Admt 1 09183

32°44'N-117°11'W

# RNAV (GPS) RWY 27