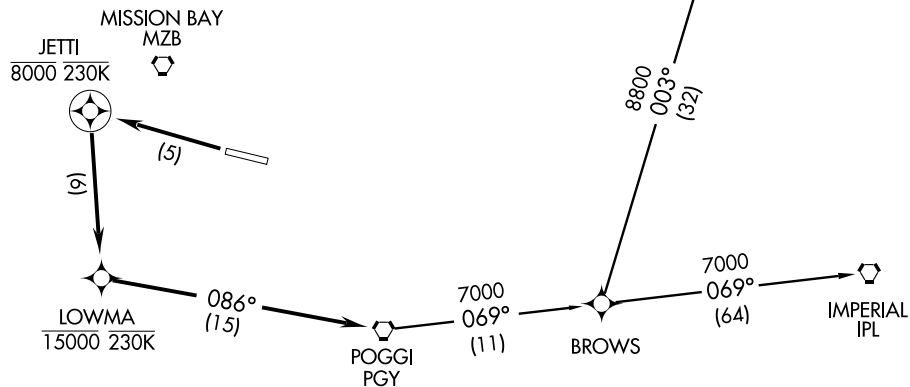


# POGGI TWO DEPARTURE (RNAV)

ATIS 134.8  
CLNC DEL 125.9  
GND CON 123.9  
LINDBERGH TOWER  
118.3 338.225  
SOCAL DEP CON  
125.15 317.55



NOTE: DME/DME/IRU or GPS required.

NOTE: Imperial Transition: For Non-GPS equipped aircraft PGY, MZB, JLI VORTACs must be operational.

NOTE: Julian Transition: For Non-GPS equipped aircraft PGY VORTAC must be operational.

NOTE: RNAV 1.

NOTE: RADAR REQUIRED.

NOTE: Do not exceed 230 KIAS until LOWMA.

### TAKE-OFF MINIMUMS

Rwy 9, NA-ATC.

Rwy 27, Standard with minimum ATC climb of 400' per NM to 520 and minimum obstacle climb of 317' per NM to 1600.

### TAKE-OFF OBSTACLE NOTES

Rwy 27: Multiple trees, flag pole, light pole, and obstruction lights beginning at 287' from DER, 1985' left to 1577' right of centerline, up to 116' AGL/269' MSL.

NOTE: Chart not to scale.



### DEPARTURE ROUTE DESCRIPTION

TAKE-OFF RUNWAY 27: Climb direct to cross JETTI at or below 8000, then climbing left turn direct to cross LOWMA at or below 15000, then via 086° track to POGGI VORTAC, Thence....

...via (transition). Maintain 15000 or as assigned by ATC, expect filed altitude 10 minutes after departure.

IMPERIAL TRANSITION (POGGI2.IPL)

JULIAN TRANSITION (POGGI2.JLI)