

PEBLE THREE DEPARTURE

SL-373 (FAA)

SAN DIEGO INTL (SAN)
SAN DIEGO, CALIFORNIA

ATIS 134.8
 CLNC DEL
 125.9
 GND CON
 123.9
 LINDBERGH TOWER
 118.3 338.225
 SOCAL DEP CON
 WEST 119.6 363.1

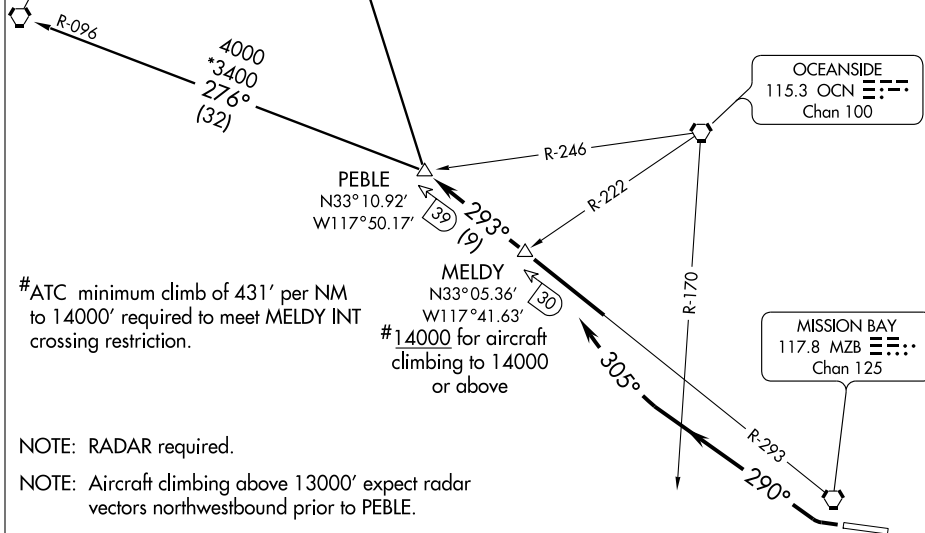
SEAL BEACH
 115.7 SLI : : : :
 Chan 104
 N33°47.00' - W118°03.29'
 L-3-4, H-4

TAKE-OFF MINIMUMS

Rwy 9: NA-ATC operations.
 Rwy 27: 300-1½ or standard with minimum climb
 of 317' per NM to 400.

NOTE: Rwy 27: Trees 1 mile from departure end of
 rwy, 685' right of centerline, 220' AGL/253' MSL.
 Trees 3118' from departure end of rwy, 846'
 right of centerline, 120' AGL/149' MSL.
 Flagpole 2511' from departure end of rwy,
 700' left of centerline, 90' AGL/116' MSL.

SANTA CATALINA
 111.4 SXC : : : :
 Chan 51
 N33°22.50' - W118°25.20'
 L-3-4, H-4



#ATC minimum climb of 431' per NM
 to 14000' required to meet MELDY INT
 crossing restriction.

#14000 for aircraft
 climbing to 14000
 or above

NOTE: RADAR required.

NOTE: Aircraft climbing above 13000' expect radar
 vectors northwestbound prior to PEBLE.

NOTE: Chart not to scale.

DEPARTURE ROUTE DESCRIPTION

TAKE-OFF RUNWAY 27: Climbing right turn via heading 290° until crossing OCN VORTAC R-170, then turn right via heading 305° to intercept and proceed via via MZB VORTAC R-293 to PEBLE INT. Aircraft climbing to 14000' or above, cross MELDY INT at or above 14000'. Then via (transition) or (assigned altitude). Maintain assigned altitude.

SANTA CATALINA TRANSITION (PEBLE3.SXC): From over PEBLE INT via SXC R-096 to SXC VORTAC.

SEAL BEACH TRANSITION (PEBLE3.SLI): From over PEBLE INT via SLI R-148 to SLI VORTAC.

PEBLE THREE DEPARTURE

SW-3, 22 OCT 2009 to 19 NOV 2009

SW-3, 22 OCT 2009 to 19 NOV 2009