

LYNDI ONE ARRIVAL (RNAV)

ST-373 (FAA)

SAN DIEGO INTL
SAN DIEGO, CALIFORNIA

6002 1001 01 0000 2009 09 19 19 NOV 2009

- IMPERIAL TRANSITION (IPL.LYNDI1)
- NEEDLES TRANSITION (EED.LYNDI1)
- PARKER TRANSITION (PKE.LYNDI1)
- TWENTYNINE PALMS TRANSITION (TNP.LYNDI1)

From LUCKI WP via 236° track to cross LYNDI WP at/above 5000 (MOCA 5000). Expect RNAV (GPS) Rwy 27 approach.

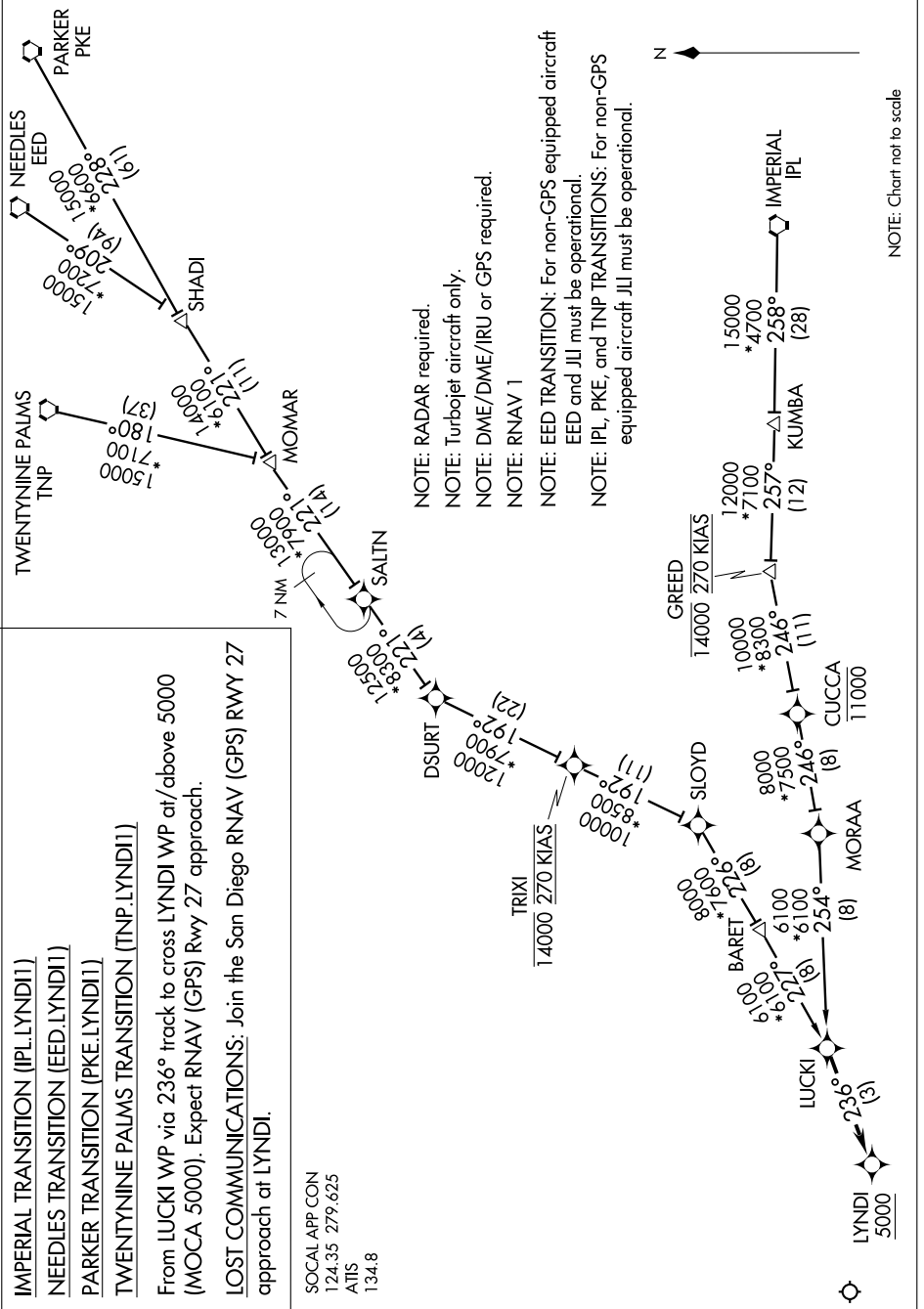
LOST COMMUNICATIONS: Join the San Diego RNAV (GPS) Rwy 27 approach at LYNDI.

SOCAL APP CON
124.35 279.625
ATIS
134.8

- NOTE: RADAR required.
- NOTE: Turbojet aircraft only.
- NOTE: DME/DME/IRU or GPS required.
- NOTE: RNAV 1
- NOTE: EED TRANSITION: For non-GPS equipped aircraft EED and JLI must be operational.
- NOTE: IPL, PKE, and TNP TRANSITIONS: For non-GPS equipped aircraft JLI must be operational.



NOTE: Chart not to scale



SW-3, 22 OCT 2009 to 19 NOV 2009

LYNDI ONE ARRIVAL (RNAV)