



BORDER FIVE DEPARTURE

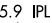
SL-373 (FAA)

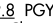
SAN DIEGO INTL (SAN)
SAN DIEGO, CALIFORNIA

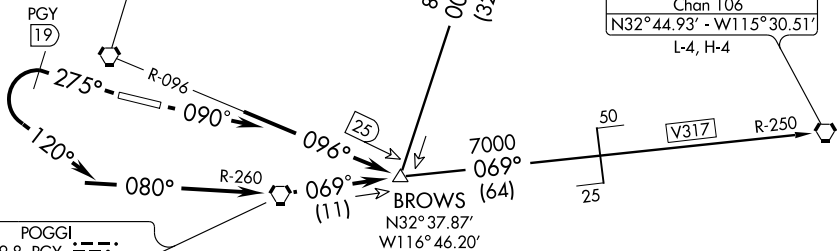
ATIS 134.8
CLNC DEL 125.9
GND CON 123.9
LINDBERGH TOWER
118.3 338.225
SOCAL DEP CON
RWY 27 125.15 317.55
RWY 9 124.35 279.625

MISSION BAY
117.8 MZB 
Chan 125

JULIAN
114.0 JLI 
Chan 87
N33°08.43' - W116°35.16'
L-4, H-4

IMPERIAL
115.9 IPL 
Chan 106
N32°44.93' - W115°30.51'
L-4, H-4

POGGI
109.8 PGY 
Chan 35
N32°36.62' - W116°58.75'



NOTE: Runway 9- RADAR REQUIRED.
NOTE: Runway 27- DME REQUIRED.

TAKE-OFF MINIMUMS

Rwy 9, 300-1 with minimum climb of 610' per NM to 1900.
Rwy 27, 300-1½ or standard with minimum climb of 317' per NM to 400.

TAKE-OFF NOTES

Rwy 9: Trees 792 feet from departure end of runway, 142 feet left of centerline, 60' AGL/99' MSL.
Antenna 740 feet from departure end of runway, 302 feet right of centerline, 62' AGL/82' MSL.
Antenna 1946 feet from departure end of runway, 969 feet left of centerline, 126' AGL/192' MSL.
Trees 1377 feet from departure end of runway, 285 feet left of centerline, 80' AGL/135' MSL.
Trees 4625 feet from departure end of runway, 1414 feet left of centerline, 250' AGL/385' MSL.

Rwy 27: Trees 1 mile from departure end of runway, 685 feet right of centerline, 220' AGL/253' MSL.
Flagpole 2511 feet from departure end of runway, 700 feet left of centerline, 90' AGL/116' MSL.

NOTE: Chart not to scale.

DEPARTURE ROUTE DESCRIPTION

TAKE-OFF RUNWAY 9: Climb via heading 090° to intercept and proceed via MZB R-096 to BROWS INT. Then via (transition) or (assigned route). Maintain assigned altitude.

TAKE-OFF RUNWAY 27: Climb via heading 275° until PGY 19 DME, then turn left via heading 120° to intercept and proceed via PGY R-260 and R-069 to BROWS INT. Then via (transition) or (assigned route). Maintain assigned altitude.

IMPERIAL TRANSITION (BRDR5.IPL): From over BROWS INT via PGY R-069 and IPL R-250 to IPL VORTAC.

JULIAN TRANSITION (BRDR5.JLI): From over BROWS INT via JLI R-182 to JLI VORTAC.

BORDER FIVE DEPARTURE

SW-3, 22 OCT 2009 to 19 NOV 2009

SW-3, 22 OCT 2009 to 19 NOV 2009