

VOR RWY 32

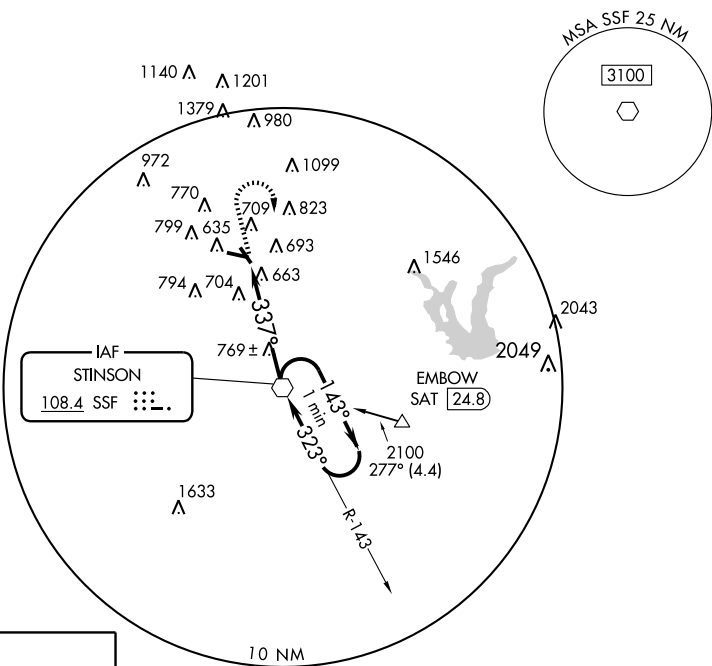
SAN ANTONIO/STINSON MUNI (SSF)

VOR SSF 108.4	APP CRS 337°	Rwy Idg TDZE Apt Elev	3756 571 577
-------------------------	------------------------	-----------------------------	---

▽ When local altimeter setting not received, use San Antonio Intl altimeter setting and increase all MDAs 60 feet, and S-32 Cat C visibility 1/4 mile.

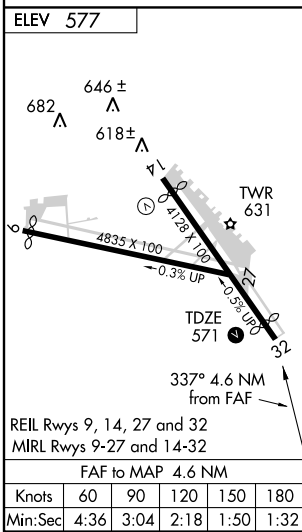
MISSED APPROACH: Climb to 1400 then climbing right turn to 2500 direct SSF VOR and hold.

ATIS 128.8	SAN ANTONIO APP CON 125.7 290.225	STINSON TOWER ★ 118.2 (CTAF) 0 379.9	GND CON 121.7 379.9	CLNC DEL 121.7	UNICOM 122.95
----------------------	---	--	-------------------------------	--------------------------	-------------------------

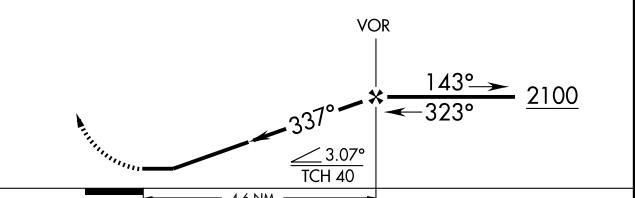


SC-3, 22 OCT 2009 to 19 NOV 2009

SC-3, 22 OCT 2009 to 19 NOV 2009



1400	2500	SSF 108.4	VGSI and descent angles not coincident.	One Minute Holding Pattern
------	------	--------------	---	----------------------------



CATEGORY	A	B	C	D
S-32	1020-1 449 (500-1)		1020-1/4 449 (500-1/4)	NA
CIRCLING	1040-1 463 (500-1)	1100-1 523 (600-1)	1100-1/2 523 (600-1/2)	NA