

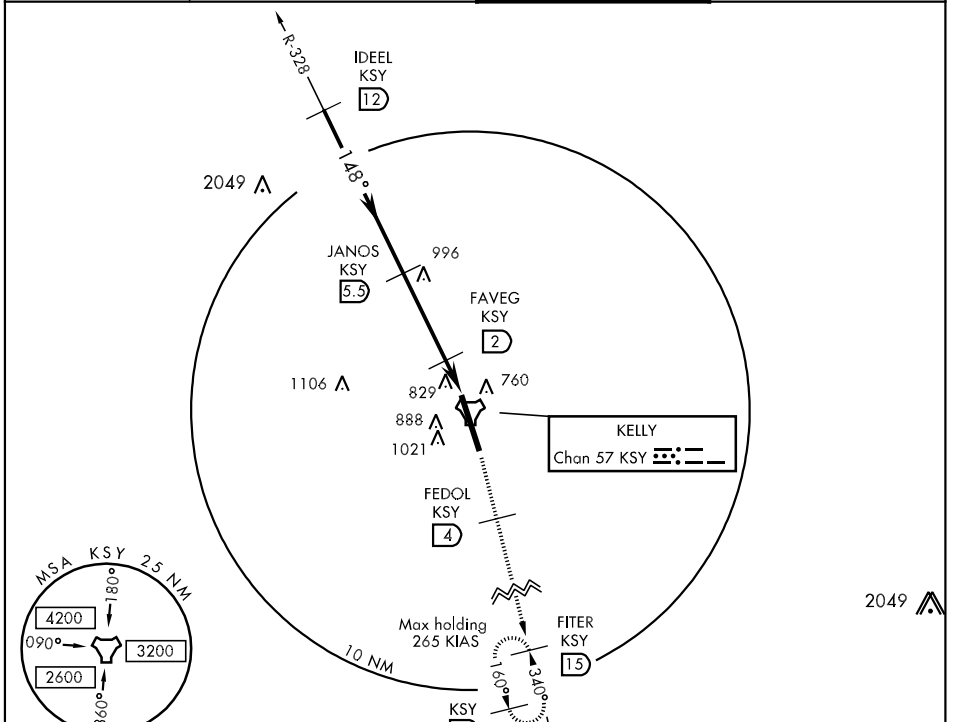
TACAN KSY Chan 57	APCH CRS 148°	Rwy ldg 11,550 TDZE 691 Arpt Elev 691
-----------------------------	-------------------------	--

AL-371 [USAF] LACKLAND AFB (KELLY FLD ANNEX) (KSKF)

*When ALS inop, increase vis CAT A8 RVR to 50 and vis to 1 mile, CAT CD RVR to 60 and vis to 1¼ mile, CAT E vis to 1½ miles.
 **Circling not authorized E of Rwy 15-33.

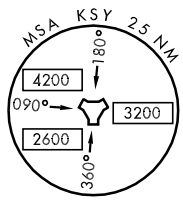
ALSF-1 MISSED APPROACH: Climb on track 155° until intercepting KSY R-140, cross 4 DME at or below 2500 then climb to 3000 direct FITER and hold.

ATIS * 120.45 273.5	SAN ANTONIO APP CON 118.05 353.5	KELLY TOWER 124.3 322.35	GND CON 121.8 289.4
-------------------------------	--	------------------------------------	-------------------------------

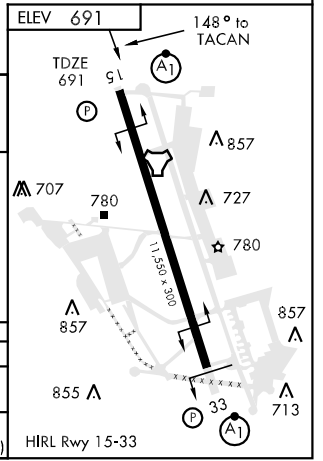
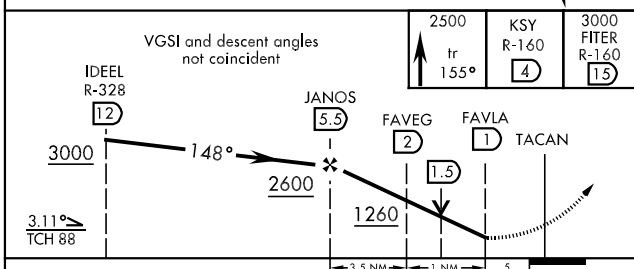


SC-3, 22 OCT 2009 to 19 NOV 2009

SC-3, 22 OCT 2009 to 19 NOV 2009



EMERG SAFE ALT 100 NM 4200



CATEGORY	A	B	C	D	E
S-15 *	1100/24	409 (500-½)	1100/40	409 (500-¾)	1100/50 409 (500-1)
CIRCLING **	1220-1 529 (600-1)	1340-1 649 (700-1)	1340-1¼ 649 (700-1¾)	1340-2 649 (700-2)	1900-3 1209(1300-3)