

APCH CRS 335°	Rwy Idg 11,550
	TDZE 667
	Arpt Elev 691

AL-371 [USAF]

LACKLAND AFB (KELLY FLD ANNEX) (KSKF)

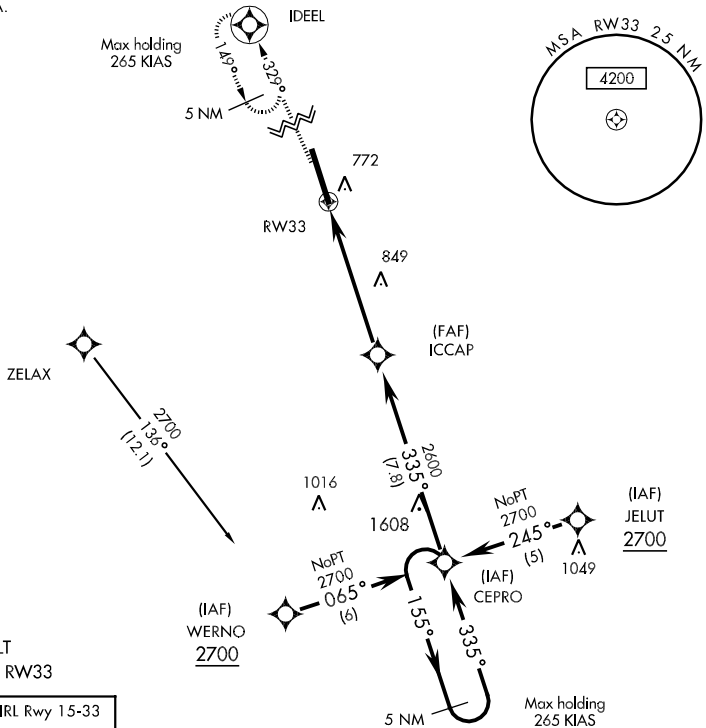
* When ALS inop, increase CAT AB RVR to 50 and vis to 1 mile, CAT C vis to 1½ miles, CAT D vis to 1¾ miles, and CAT E vis to 2 miles.
 ** Circling not authorized E of Rwy 15-33.



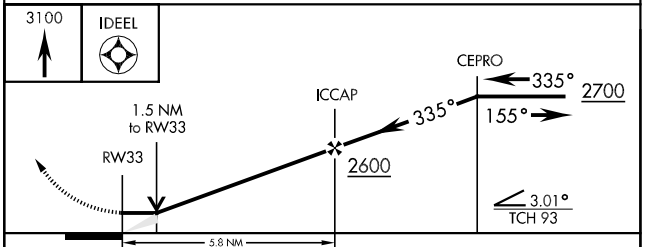
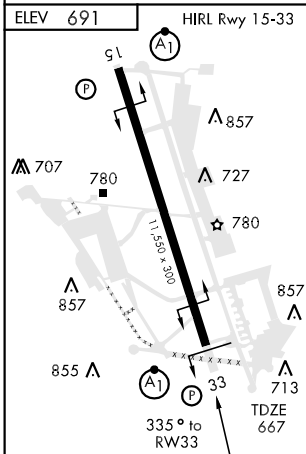
MISSED APPROACH: Climb to 3100 direct IDEEL and hold.

ATIS ★ 120.45 273.5	SAN ANTONIO APP CON 118.05 353.5	KELLY TOWER 124.3 322.35	GND CON 121.8 289.4
-------------------------------	--	------------------------------------	-------------------------------

DME/DME RNP-0.3 NA.



EMERG SAFE ALT
100 NM 4200 FROM RW33



CATEGORY	A	B	C	D	E
LNAV MDA *	1240/24 573 (600-1/2)	1240/50 573 (600-1)	1240/60 573 (600-1¼)	1240/60 573 (600-1½)	1240-1½ 573 (600-1½)
CIRCLING **	1240-1 549 (600-1)	1340-1 649 (700-1)	1340-1¼ 649 (700-1¼)	1340-2 649 (700-2)	1900-3 1209 (1300-3)

SC-3, 22 OCT 2009 to 19 NOV 2009

SC-3, 22 OCT 2009 to 19 NOV 2009