

LOC I-SKF <b>110.1</b>	APCH CRS <b>155°</b>	Rwy Idg 11,550
		TDZE 691
		Arpt Elev 691

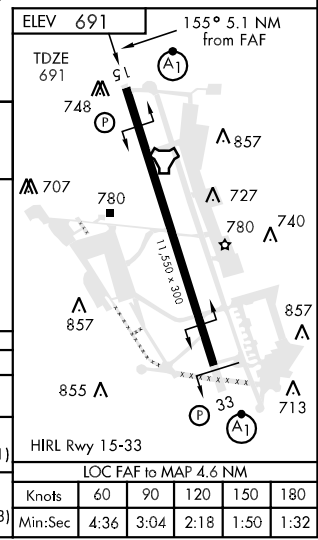
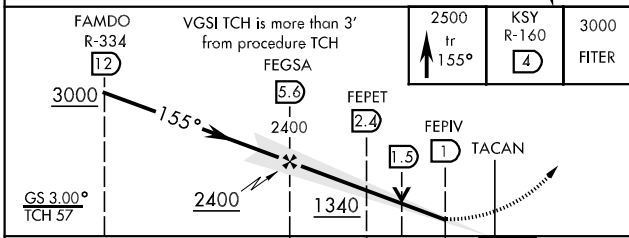
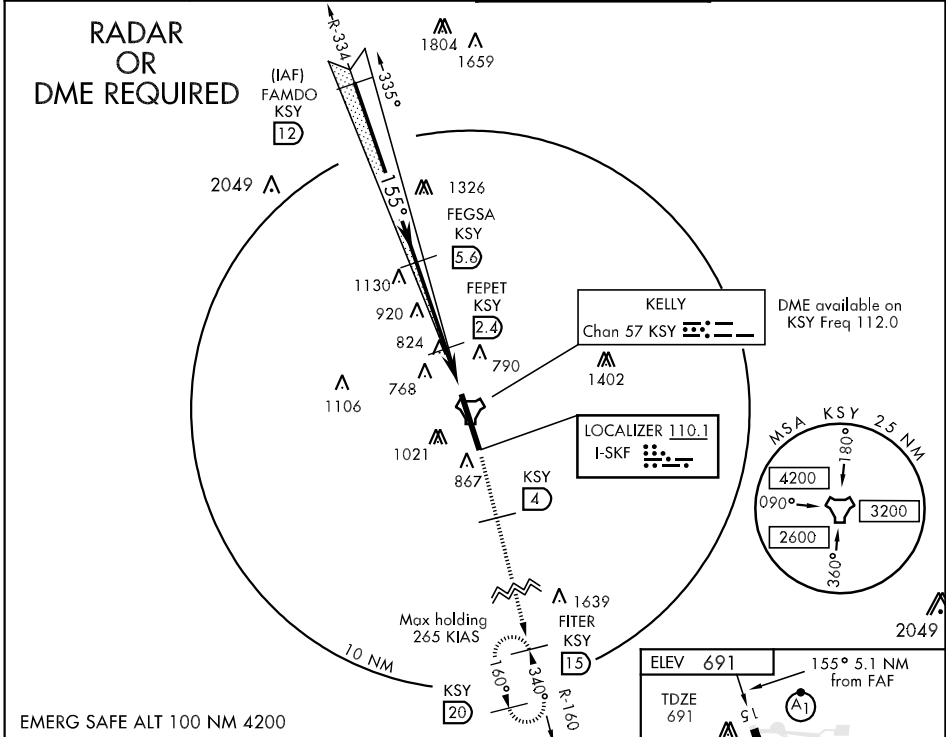
AL-371 [USAF]

LACKLAND AFB (KELLY FLD ANNEX) (KSKF)

\* When ALS inop, increase ALL CAT RVR to 40 and vis to ¼ mile.  
 \*\* When ALS inop, increase vis CAT AB RVR to 50 and vis to 1 mile,  
 CAT CD RVR to 60 and vis to 1¼ miles, CAT E vis to 1½ miles.  
 \*\*\* Circling not authorized E of Rwy 15-33.

ALSF-1 <b>A1</b>	MISSED APPROACH: Climb on track 155° until intercepting KSY R-160, cross 4 DME at or below 2500, then climb to 3000 direct FITER and hold.
---------------------	--------------------------------------------------------------------------------------------------------------------------------------------

ATIS ★ <b>120.45 273.5</b>	SAN ANTONIO APP CON <b>118.05 353.5</b>	KELLY TOWER <b>124.3 322.35</b>	GND CON <b>121.8 289.4</b>
-------------------------------	--------------------------------------------	------------------------------------	-------------------------------



CATEGORY	A	B	C	D	E
S-ILS 15 *	891/24		200	(200-½)	
S-LOC/DME 15 **	1100/24 409 (500-½)		1100/40 409 (500-¾)	1100/50 409 (500-1)	
CIRCLING ***	1220-1 529 (600-1)	1340-1 649 (700-1)	1340-1¼ 649 (700-1¼)	1340-2 649 (700-2)	1900-3 1209(1300-3)

SC-3, 22 OCT 2009 to 19 NOV 2009

SC-3, 22 OCT 2009 to 19 NOV 2009