

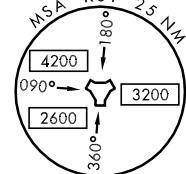
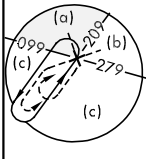
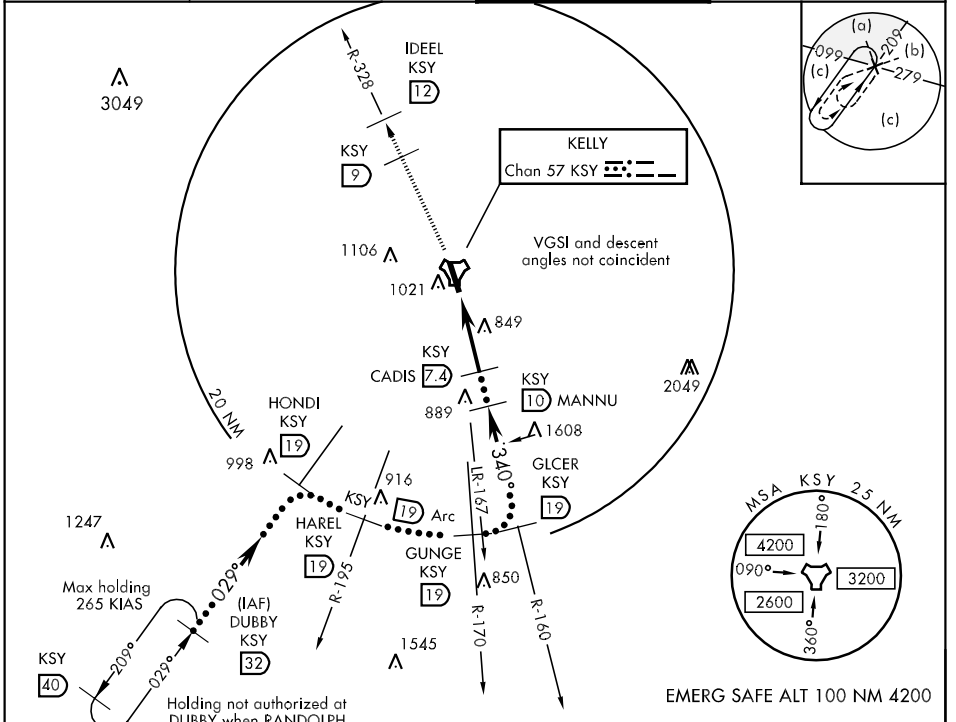
TACAN KSY Chan 57	APCH CRS 340°	Rwy ldg 11,550 TDZE 667 Arpt Elev 691	JAL-371 [USAF] LACKLAND AFB (KELLY FLD ANNEX) (KSKF)
----------------------	------------------	---	--

\* When ALS inop, increase CAT C RVR to 60 and vis to 1¼ miles, CAT D vis to 1½ miles, CAT E vis to 1¾ miles.  
 \*\* Circling not authorized E of Rwy 15-33.

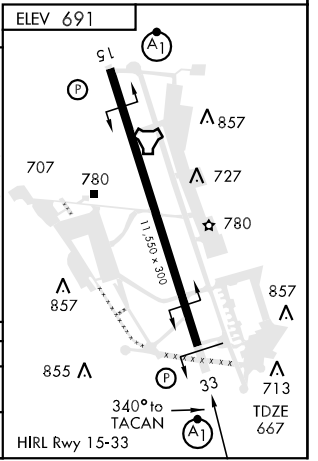
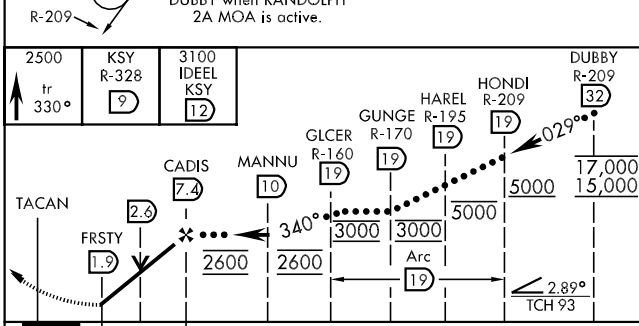


MISSED APPROACH: Track 330° climbing to 2500, intercept the KSY TACAN R-328 to 9 DME, then climb to 3100 direct IDEEL. Expect ATC instructions.

ATIS ★ 120.45 273.5	SAN ANTONIO APP CON 118.05 353.5	KELLY TOWER 124.3 322.35	GND CON 121.8 289.4
------------------------	-------------------------------------	-----------------------------	------------------------



EMERG SAFE ALT 100 NM 4200



CATEGORY	C	D	E
S-33 *	1140/40 473 (500-¾)	1140/50 473 (500-1)	1140/60 473 (500-1¼)
CIRCLING **	1340-1¼ 649 (700-1¼)	1340-2 649 (700-2)	1900-3 1209 (1300-3)

SC-3, 22 OCT 2009 to 19 NOV 2009

SC-3, 22 OCT 2009 to 19 NOV 2009