

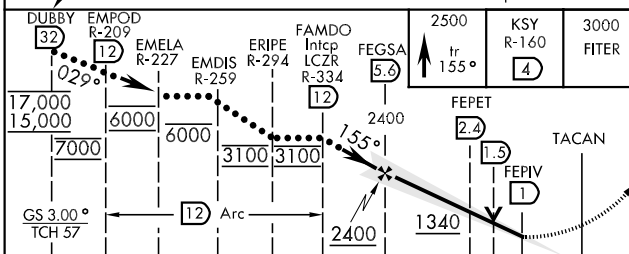
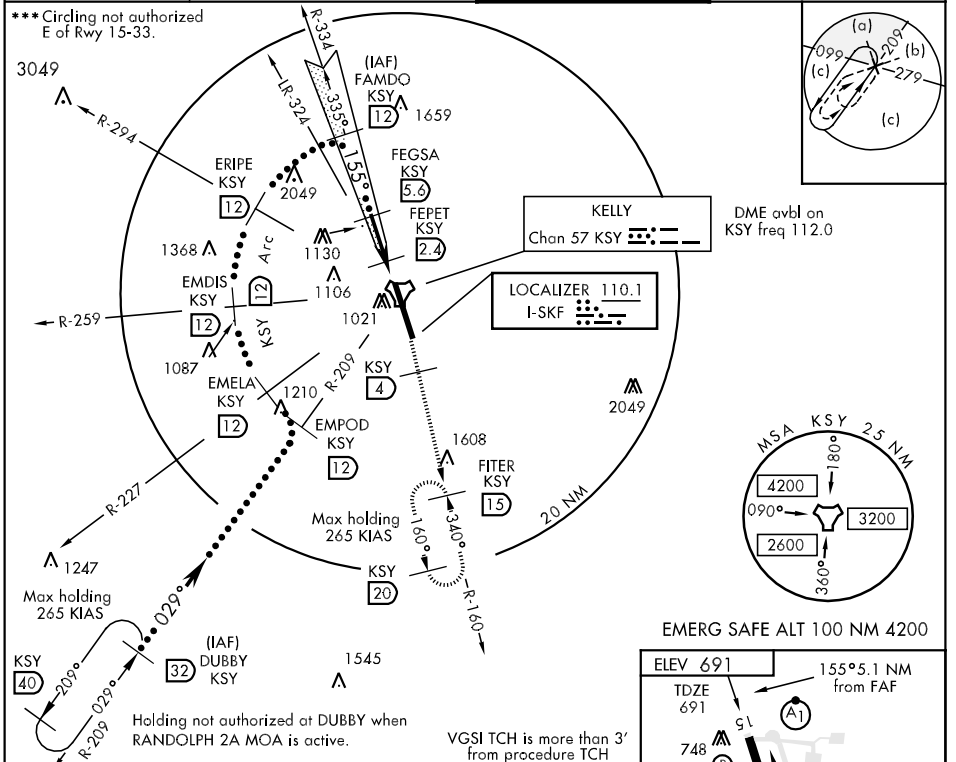
LOC I-SKF 110.1	APCH CRS 155°	Rwy Idg TDZE Arpt Elev 11,550 691 691
---------------------------	-------------------------	---

JAL-371 [USAF] LACKLAND AFB (KELLY FLD ANNEX) (KSKF)

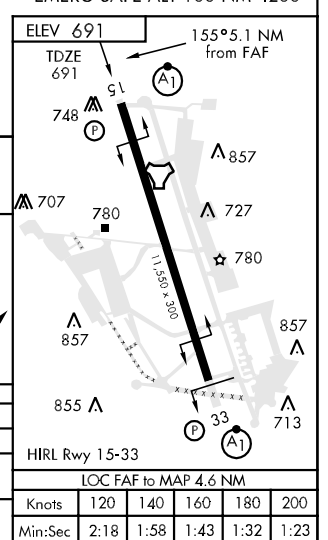
* When ALS inop, increase CAT CDE RVR to 40 and vis to ¾ mile.
 ** When ALS inop, increase CAT CD RVR vis to 60 and vis to 1 ¼ miles, CAT E vis to 1 ½ miles.

ALSF-1 MISSED APPROACH: Climb on track 155° until intercepting KSY R-160, cross 4 DME at or below 2500, then climb to 3000 direct FITER and hold.

ATIS ★ 120.45 273.5	SAN ANTONIO APP CON 118.05 353.5	KELLY TOWER 124.3 322.35	GND CON 121.8 289.4
-------------------------------	--	------------------------------------	-------------------------------



CATEGORY	C	D	E
S-ILS 15 *	891/24	200	(200-½)
S-LOC/ ** DME 15	1100/40 409	(500-¾)	1100/50 409 (500-1)
CIRCLING ***	1340-1¾ 649 (700-1¾)	1340-2 649 (700-2)	1900-3 1209 (1300-3)



SC-3, 22 OCT 2009 to 19 NOV 2009

SC-3, 22 OCT 2009 to 19 NOV 2009