

RNAV (GPS) RWY 30L

SAN ANTONIO INTL (SAT)

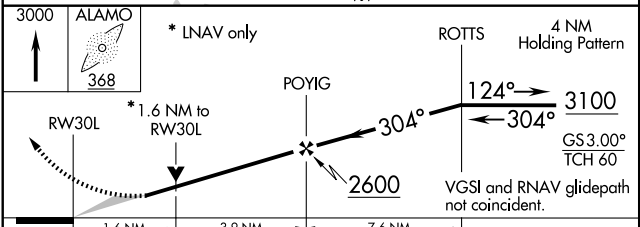
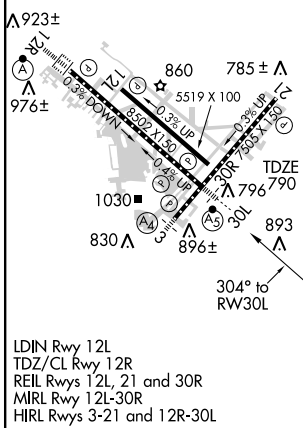
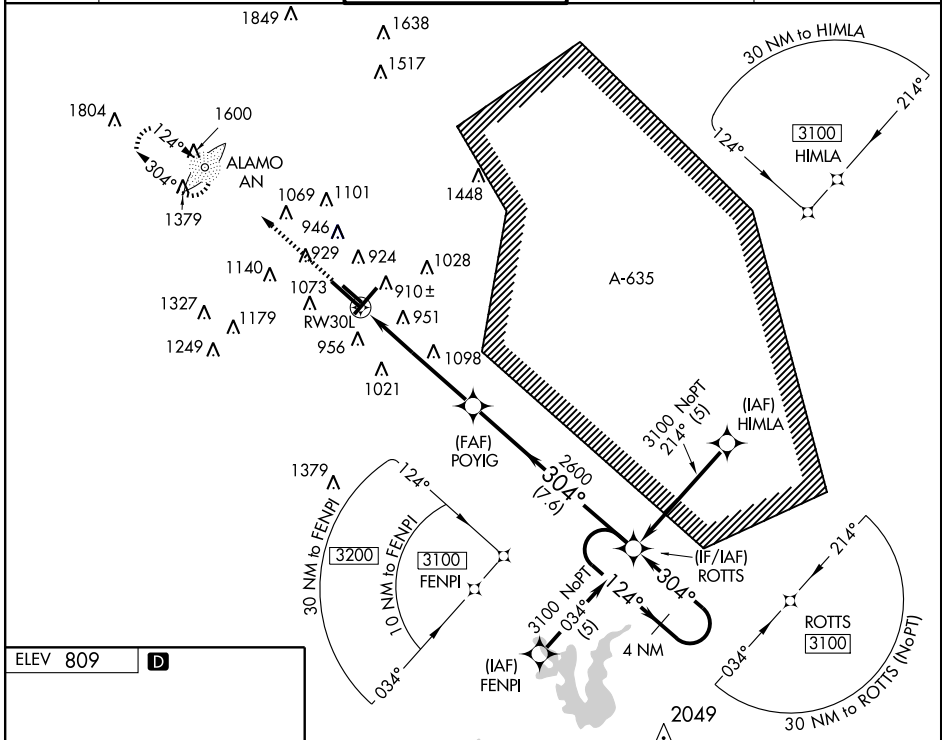
WAAS CH 61209 W30A	APP CRS 304°	Rwy Idg 8502 TDZE 790 Apt Elev 809
--	------------------------	---

▼ For inoperative MALSR, increase LPV all Cats visibility to 1½ miles. Circling NA southwest of Rwy 12R-30L. For uncompensated Baro-VNAV systems, LNAV/VNAV NA below -16°C (4°F) or above 47°C (116°F). DME/DME RNP-0.3 NA.



MISSED APPROACH: Climb to 3000 direct ALAMO LOM and hold.

ATIS 118.9	SAN ANTONIO APP CON 125.1 307.0	SAN ANTONIO TOWER 119.8 257.8	GND CON 121.9 348.6	CLNC DEL 126.7
----------------------	---	---	-------------------------------	--------------------------



CATEGORY	A	B	C	D
LPV DA		1207/50	417 (400-1)	
LNAV/VNAV DA		1246/50	456 (500-1)	
LNAV MDA	1360/24	570 (600-½)	1360/50 570 (600-1)	1360/60 570 (600-1½)
CIRCLING	1360-1	551 (600-1)	1360-1½ 551 (600-1½)	1380-2 571 (600-2)

SC-3, 22 OCT 2009 to 19 NOV 2009

SC-3, 22 OCT 2009 to 19 NOV 2009