

# RNAV (GPS) RWY 12R

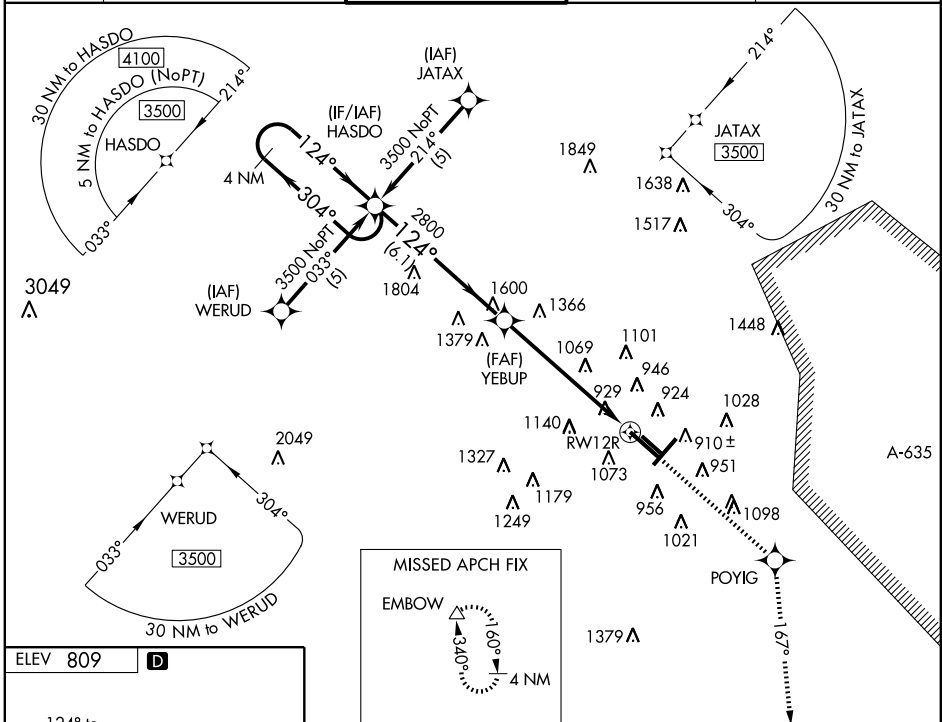
SAN ANTONIO INTL (SAT)

WAAS CH <b>82409</b> <b>W12A</b>	APP CRS <b>124°</b>	Rwy Idg TDZE Apt Elev	<b>8502</b> <b>809</b> <b>809</b>
--	------------------------	-----------------------------	---

**⚠** For inoperative ALSF-2, increase LPV all Cats visibility to 1 mile. Circling NA southwest of Rwy 12R-30L. For uncompensated Baro-VNAV systems, LNAV/VNAV NA below -16°C (4°F) or above 47°C (116°F). DME/DME RNP-0.3 NA.

**ALSF-2** MISSED APPROACH: Climb to 3100 direct POYIG and right turn via 167° track to EMBOW and hold.

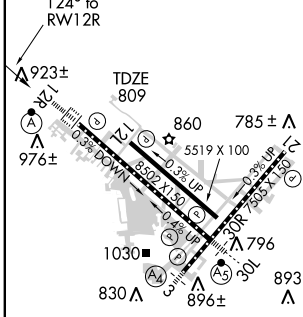
ATIS <b>118.9</b>	SAN ANTONIO APP CON <b>125.1 307.0</b>	SAN ANTONIO TOWER <b>119.8 257.8</b>	GND CON <b>121.9 348.6</b>	CLNC DEL <b>126.7</b>
----------------------	---	---	-------------------------------	--------------------------



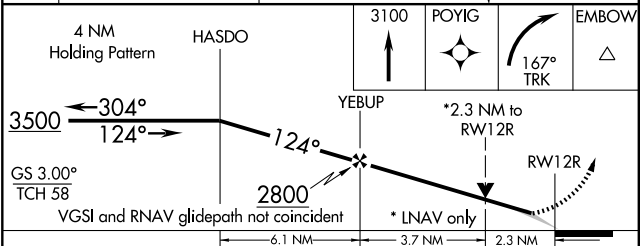
SC-3, 22 OCT 2009 to 19 NOV 2009

SC-3, 22 OCT 2009 to 19 NOV 2009

ELEV 809	<b>D</b>
----------	----------



LDIN Rwy 12L  
TDZ/CL Rwy 12R  
REIL Rws 12L, 21 and 30R  
MIRL Rwy 12L-30R  
HIRL Rws 3-21 and 12R-30L



CATEGORY	A	B	C	D
LPV DA		1107/24	298 (300-1/2)	
LNAV/VNAV DA		1340/60	531 (600-1/4)	
LNAV MDA	1620/24 811 (900-1/2)	1620/40 811 (900-3/4)	1620-2 811 (900-2)	1620-2 1/4 811 (900-2 1/4)
CIRCLING	1620-1 811 (900-1)	1620-1 1/4 811 (900-1 1/4)	1620-2 1/2 811 (900-2 1/2)	1620-2 3/4 811 (900-2 3/4)