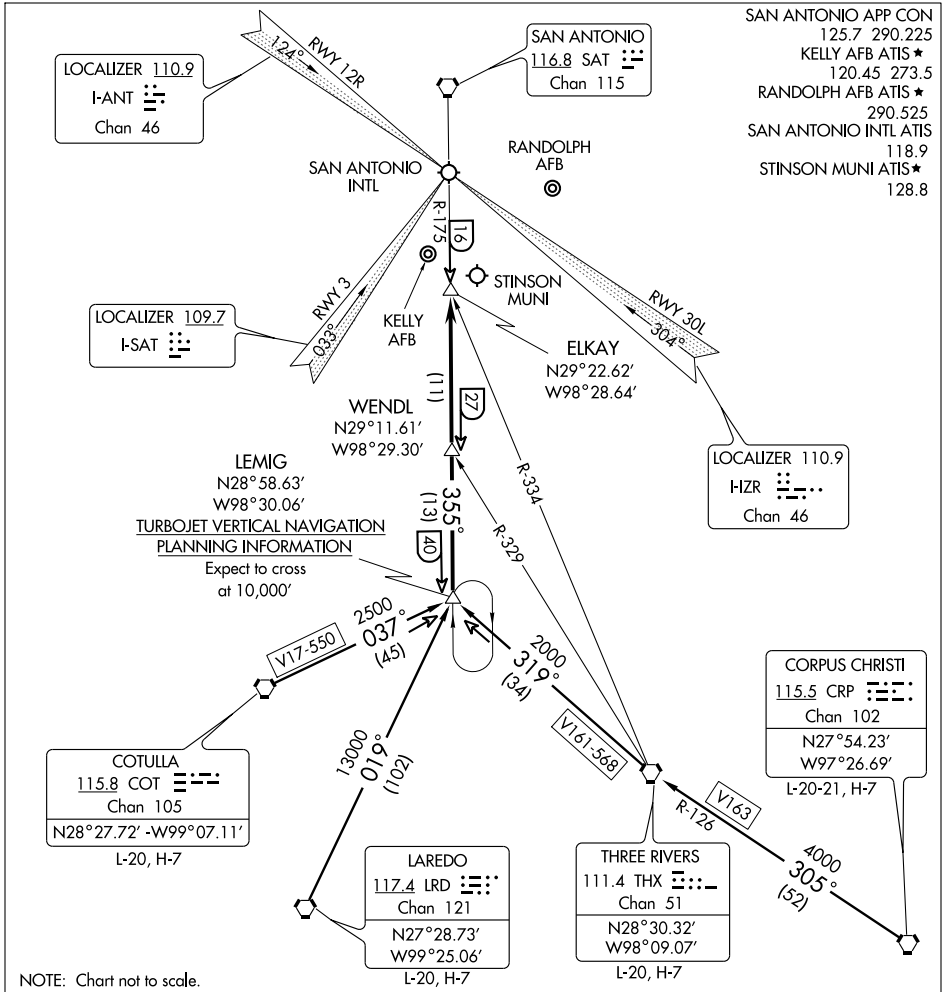


# LEMIG ONE ARRIVAL (LEMIG.LEMIG1)

SAN ANTONIO, TEXAS



- SAN ANTONIO APP CON  
125.7 290.225
- KELLY AFB ATIS ★  
120.45 273.5
- RANDOLPH AFB ATIS ★  
290.525
- SAN ANTONIO INTL ATIS  
118.9
- STINSON MUNI ATIS ★  
128.8

SC-3, 22 OCT 2009 to 19 NOV 2009

SC-3, 22 OCT 2009 to 19 NOV 2009

NOTE: Chart not to scale.

**CORPUS CHRISTI TRANSITION (CRP.LEMIG1):** From over CRP VORTAC via CRP R-305 and THX R-126 to THX VORTAC, then via THX R-319 to LEMIG INT. Thence . . . .

**COTULLA TRANSITION (COT.LEMIG1):** From over COT VORTAC via COT R-037 to LEMIG INT. Thence . . . .

**LAREDO TRANSITION (LRD.LEMIG1):** From over LRD VORTAC via LRD R-019 to LEMIG INT. Thence . . . .

**THREE RIVERS TRANSITION (THX.LEMIG1):** From over THX VORTAC via THX R-319 to LEMIG INT. Thence . . . .

. . . . **ALL AIRPORTS:** From over LEMIG INT via SAT R-175 to ELKAY INT. Expect radar vectors to final approach course.

# LEMIG ONE ARRIVAL (LEMIG.LEMIG1)

SAN ANTONIO, TEXAS