

SAN ANGELO, TEXAS

AL-367 (FAA)

# VOR/DME or TACAN RWY 3

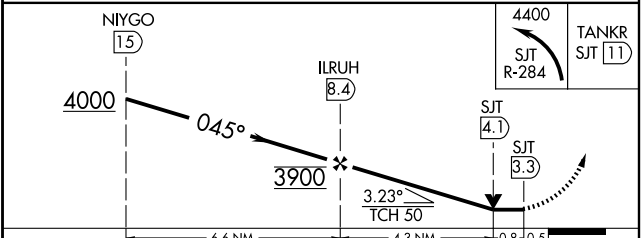
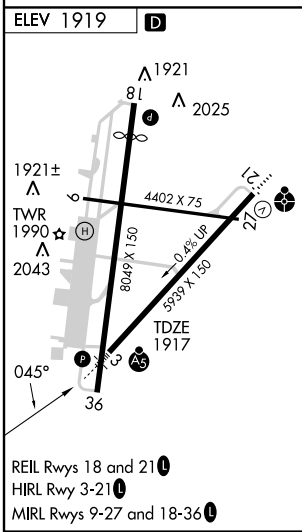
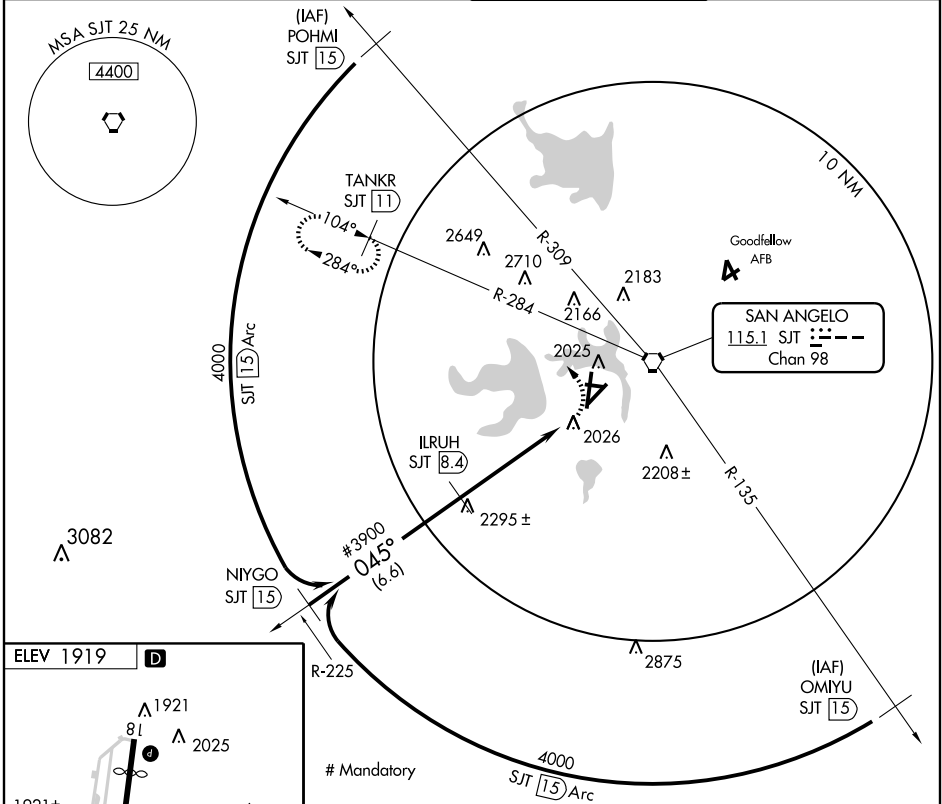
SAN ANGELO RGNL/MATHIS FIELD (SJT)

VORTAC SJT <b>115.1</b> Chan 98	APP CRS <b>045°</b>	Rwy Idg TDZE Apt Elev <b>5939</b> <b>1917</b> <b>1919</b>
---------------------------------------	------------------------	--

**ASR** \* Cat E circling NA west of Rwy 18-36.

**MALSR**  
MISSED APPROACH: Climbing left turn to 4400 via SJT R-284 to TANKR/11 DME and hold.

ATIS <b>128.45 319.0</b>	SAN ANGELO APP CON * <b>125.35 354.1</b>	MATHIS TOWER * <b>118.3 0</b> (CTAF) <b>284.7</b>	GND CON <b>121.9 348.6</b>
-----------------------------	---	--	-------------------------------



CATEGORY	A	B	C	D	E
S-3	2420-1/2	503 (600-1/2)	2420-1	503 (600-1)	2420-1 1/4 503 (600-1 1/4)
CIRCLING*	2460-1	541 (600-1)	2460-1 1/2 541 (600-1 1/2)	2480-2 561 (600-2)	2520-2 1/4 601 (700-2 1/4)

SAN ANGELO, TEXAS  
Orig-A 09015

31°21' N-100°30' W

# SAN ANGELO RGNL/MATHIS FIELD (SJT) VOR/DME or TACAN RWY 3

SC-3, 22 OCT 2009 to 19 NOV 2009

SC-3, 22 OCT 2009 to 19 NOV 2009