

# RNAV (GPS) RWY 3

SAN ANGELO RGNL/MATHIS FIELD (SJT)

WAAS CH <b>77517</b> <b>W03A</b>	APP CRS <b>034°</b>	Rwy Idg TDZE Apt Elev	<b>5939</b> <b>1917</b> <b>1919</b>
--	------------------------	-----------------------------	---

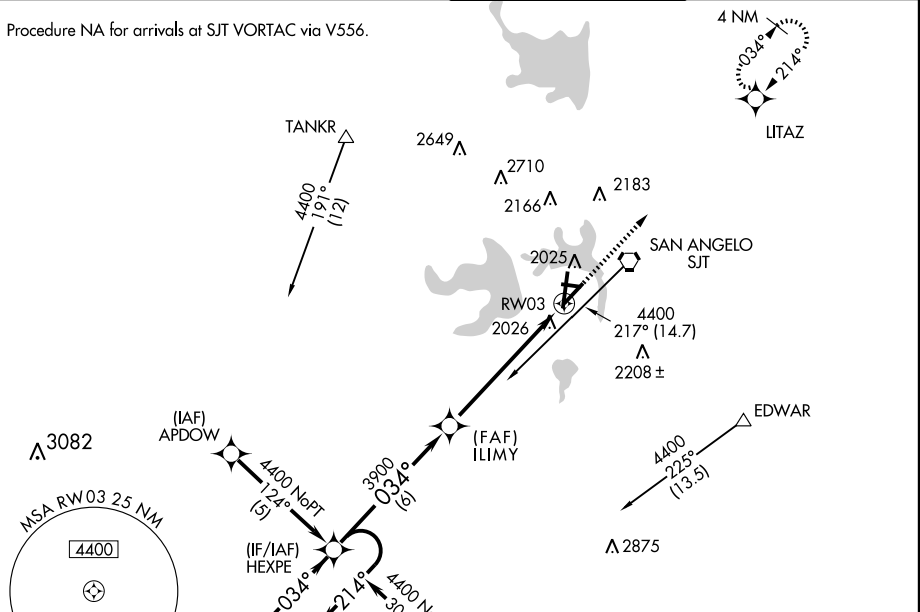
**▼** For inoperative MALSR, increase LPV visibility to  $\frac{3}{4}$  mile all Cats and LNAV Cat D visibility to  $\frac{1}{2}$  mile.  
Baro VNAV NA below  $-18^{\circ}\text{C}$  ( $0^{\circ}\text{F}$ ).  
Circling to Rwy 09 and 36 NA at night.  
DME/DME RNP-0.3 NA.



MISSED APPROACH: Climb to 3800 direct LITAZ and hold.

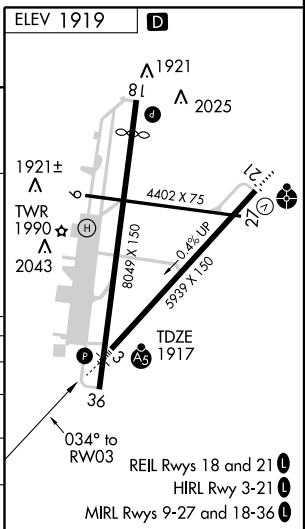
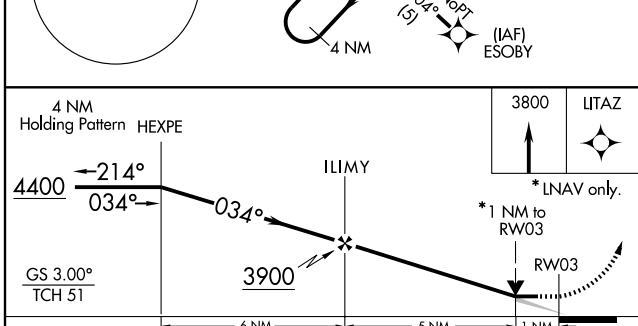
ATIS <b>128.45 319.0</b>	SAN ANGELO APP CON ★ <b>125.35 354.1</b>	MATHIS TOWER ★ <b>118.3</b> (CTAF) <b>284.7</b>	GND CON <b>121.9 348.6</b>
-----------------------------	---	--	-------------------------------

Procedure NA for arrivals at SJT VORTAC via V556.



SC-3, 22 OCT 2009 to 19 NOV 2009

SC-3, 22 OCT 2009 to 19 NOV 2009



CATEGORY	A		B		C		D	
	6 NM	5 NM	6 NM	5 NM	6 NM	5 NM	6 NM	5 NM
LPV DA	2167- $\frac{1}{2}$		250 (300- $\frac{1}{2}$ )					
LNAV/VNAV DA	2301- $\frac{3}{4}$		384 (400- $\frac{3}{4}$ )					
LNAV MDA	2300- $\frac{1}{2}$		383 (400- $\frac{1}{2}$ )		2300-1		383 (400-1)	
CIRCLING	2460- $\frac{1}{4}$		541 (600- $\frac{1}{4}$ )		2460- $\frac{1}{2}$		2480-2	
					541 (600- $\frac{1}{2}$ )		561 (600-2)	