

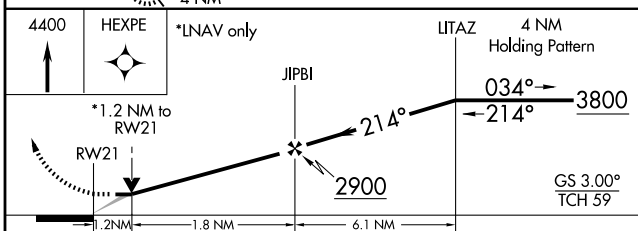
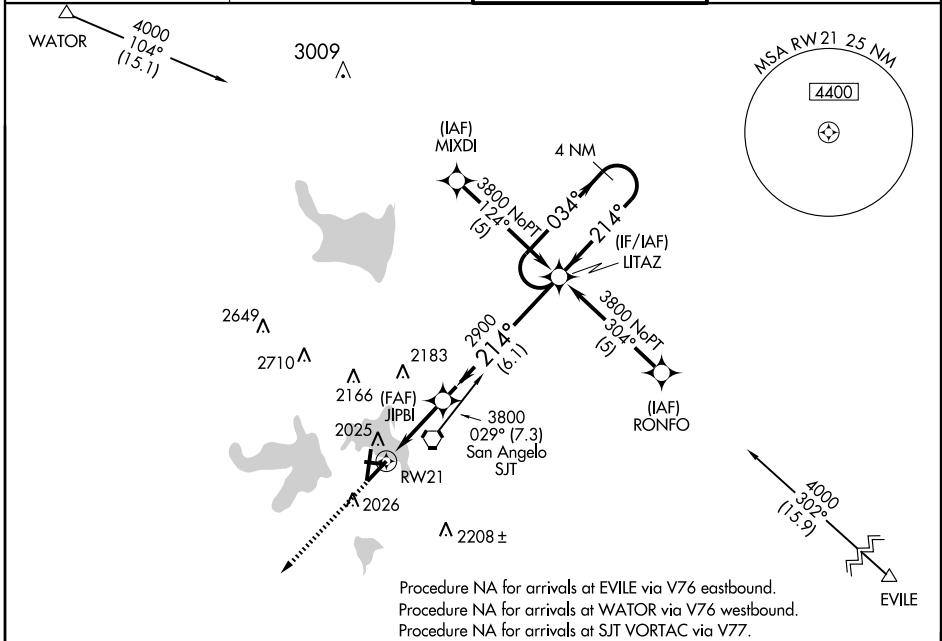
WAAS CH <b>81817</b> <b>W21A</b>	APP CRS <b>214°</b>	Rwy Idg TDZE Apt Elev	<b>5939</b> <b>1906</b> <b>1919</b>
--	------------------------	-----------------------------	---

# RNAV (GPS) RWY 21

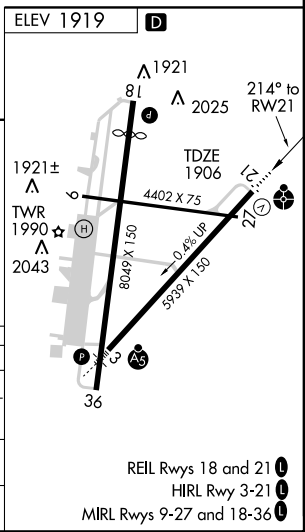
SAN ANGELO RGNL/MATHIS FIELD (SJT)

<p><b>ASR</b></p> <p>DME/DME RNP-0.3 NA. Baro VNAV NA below -18°C (0°F). Inoperative table does not apply to LPV, LNAV/VNAV all Cats and LNAV Cat C. Circling Rwy 9 and 36 NA at night.</p>	<p>ODALS</p>	<p>MISSED APPROACH: Climb to 4400 direct HEXPE and hold.</p>
---	--------------	--

<p>ATIS</p> <p><b>128.45 319.0</b></p>	<p>SAN ANGELO APP CON *</p> <p><b>125.35 354.1</b></p>	<p>MATHIS TOWER *</p> <p><b>118.3 0 (CTAF) 284.7</b></p>	<p>GND CON</p> <p><b>121.9 348.6</b></p>
--	--	--	--



CATEGORY	A	B	C	D
LPV DA		2156-3/4	250 (300-3/4)	
LNAV/VNAV DA		2325-1 1/2	419 (500-1 1/2)	
LNAV MDA	2340-3/4	434 (500-3/4)	2340-1 1/4 434 (500-1 1/4)	2340-1 1/2 434 (500-1 1/2)
CIRCLING	2460-1 1/2 541 (600-1 1/2)		2480-2 561 (600-2)	



- REIL Rwy 18 and 21
- HIRL Rwy 3-21
- MIRL Rwy 9-27 and 18-36

SC-3, 22 OCT 2009 to 19 NOV 2009

SC-3, 22 OCT 2009 to 19 NOV 2009