

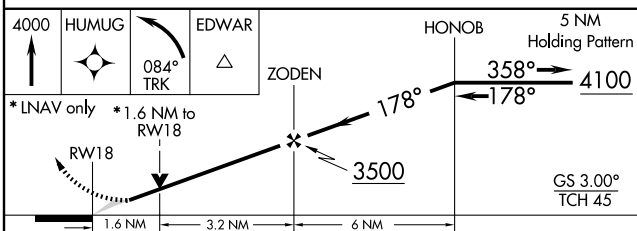
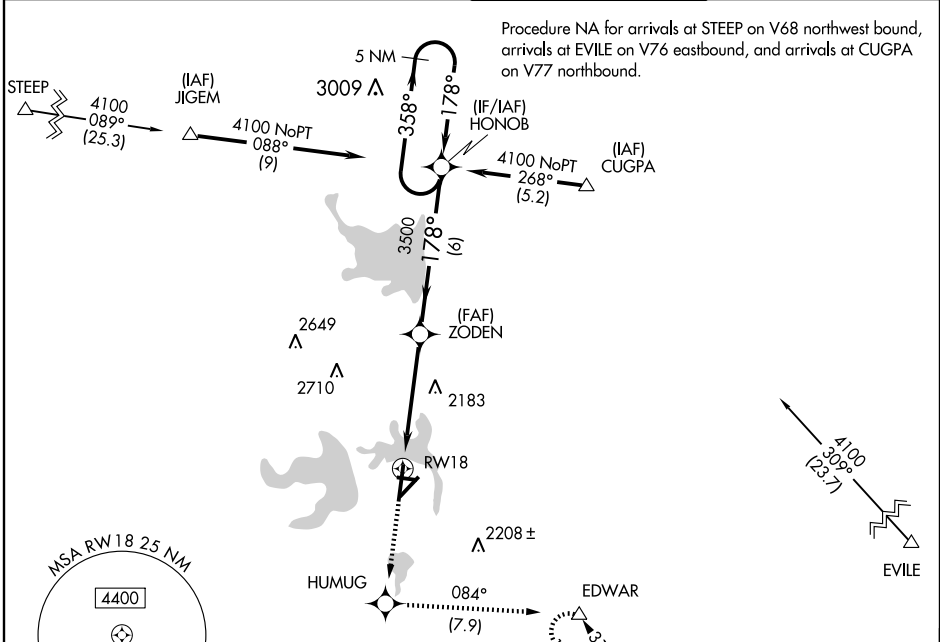
# RNAV (GPS) RWY 18

SAN ANGELO RGNL/MATHIS FIELD (SJT)

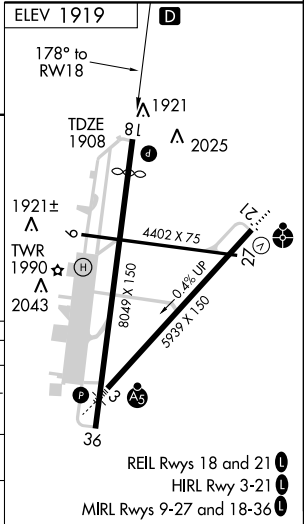
WAAS CH <b>93801</b> <b>W18A</b>	APP CRS <b>178°</b>	Rwy Idg TDZE Apt Elev	<b>7160</b> <b>1908</b> <b>1919</b>
--	------------------------	-----------------------------	---

**ASR** DME/DME RNP-0.3 NA. For uncompensated Baro-VNAV systems, LNAV/VNAV NA below -18°C (0°F) or above 45°C (113°F). MISSED APPROACH: Climb to 4000 direct HUMUG and left turn via 084° track to EDWAR and hold.

ATIS <b>128.45 319.0</b>	SAN ANGELO APP CON * <b>125.35 354.1</b>	MATHIS TOWER * <b>118.30 (CTAF) 284.7</b>	GND CON <b>121.9 348.6</b>
-----------------------------	---	--	-------------------------------



CATEGORY	A	B	C	D
LPV DA	2158-1 250 (300-1)			
LNAV/VNAV DA	2325-1½ 417 (500-1½)			
LNAV MDA	2440-1 532 (600-1)	2440-1½ 532 (600-1½)	2440-1¾ 532 (600-1¾)	2480-2 561 (600-2)
CIRCLING	2460-1½ 541 (600-1½)			2480-2 561 (600-2)



SC-3, 22 OCT 2009 to 19 NOV 2009

SC-3, 22 OCT 2009 to 19 NOV 2009