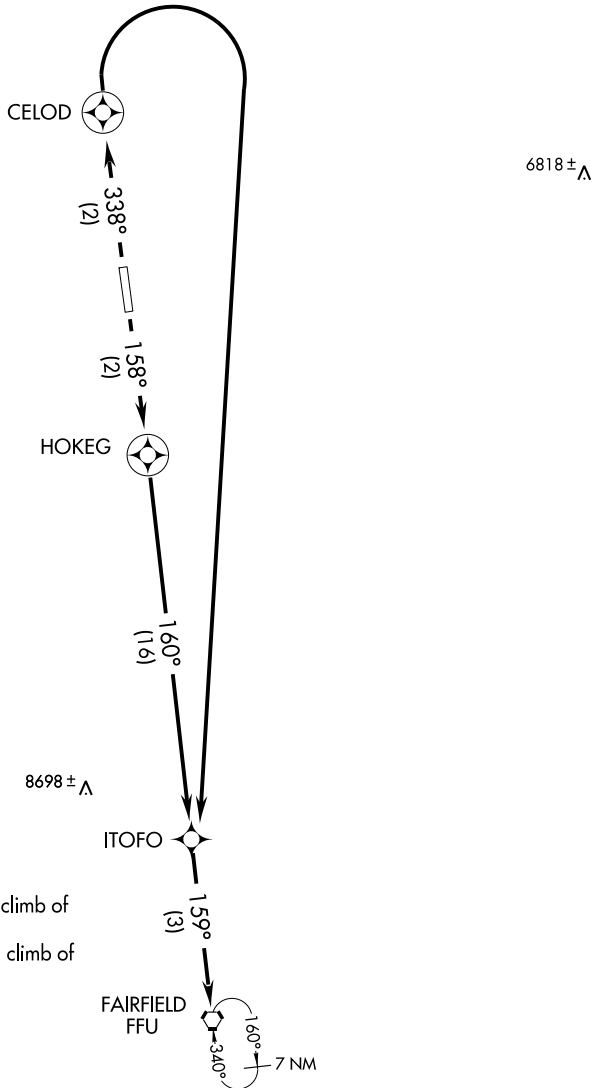


# ITOF0 ONE DEPARTURE (RNAV)

SALT LAKE CITY DEP CON  
120.2 124.3 322.3  
CLNC DEL  
127.0  
UNICOM 122.7 (CTAF)  
AWOS-3 134.425



### TAKE-OFF MINIMUMS

RWY 16: Standard with a minimum climb of 280' per NM to 7100.

RWY 34: Standard with a minimum climb of 495' per NM to 9000.

NOTE: 1. GPS Required.  
2. RNAV 1

NOTE: Chart not to scale.



### DEPARTURE ROUTE DESCRIPTION

TAKE-OFF RUNWAY 16: Climb to 9000 via 158° course to HOKEG WP, 160° course to ITOFO WP, and 159° course to FFU VORTAC and hold.

TAKE-OFF RUNWAY 34: Climb to 9000 via 338° course to CELOD WP, climbing right turn direct ITOFO WP, and 159° course to FFU VORTAC and hold.

All aircraft expect further clearance to filed altitude and route within ten minutes after departure.

# ITOF0 ONE DEPARTURE (RNAV)