

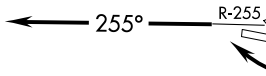



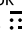
ATIS 124.85
GND CON
121.7 239.3
NORCAL DEP CON
133.0 251.15
CTAF 119.4


WOODSIDE
113.9 OSI 
Chan 86
N37°23.55'-W122°16.88'
L-2-3, H-3

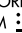
SAN JOSE
114.1 SJC 
Chan 88
N37°22.48'-W121°56.68'
L-2-3



SALINAS
117.3 SNS 
Chan 120
N36°39.83'-W121°36.19'
L-3, H-3

BIG SUR
114.0 BSR 
Chan 87
N36°10.88'-W121°38.53'
L-3, H-4

AVENAL
117.1 AVE 
Chan 118
N35°38.82'-W119°58.72'
L-3-7, H-4

FILLMORE
112.5 FIM 
Chan 72
N34°21.40'-W118°52.88'
L-3-4-7, H-4

NOTE: Chart not to scale.



DEPARTURE ROUTE DESCRIPTION

All aircraft expect vectors to assigned route. Maintain 6000'. Expect clearance to filed altitude five minutes after departure.

TAKE-OFF RUNWAYS 8 and 13: Turn right within one mile to intercept and climb via SNS R-255 for vector.

TAKE-OFF RUNWAYS 26 and 31: Climb on SNS R-255 for vector.