

VOR RWY 17

SALINA MUNI (SLN)

VORTAC SLN 117.1 Chan 118	APP CRS 183°	Rwy Idg 12300 TDZE 1246 Apt Elev 1288
---	------------------------	--

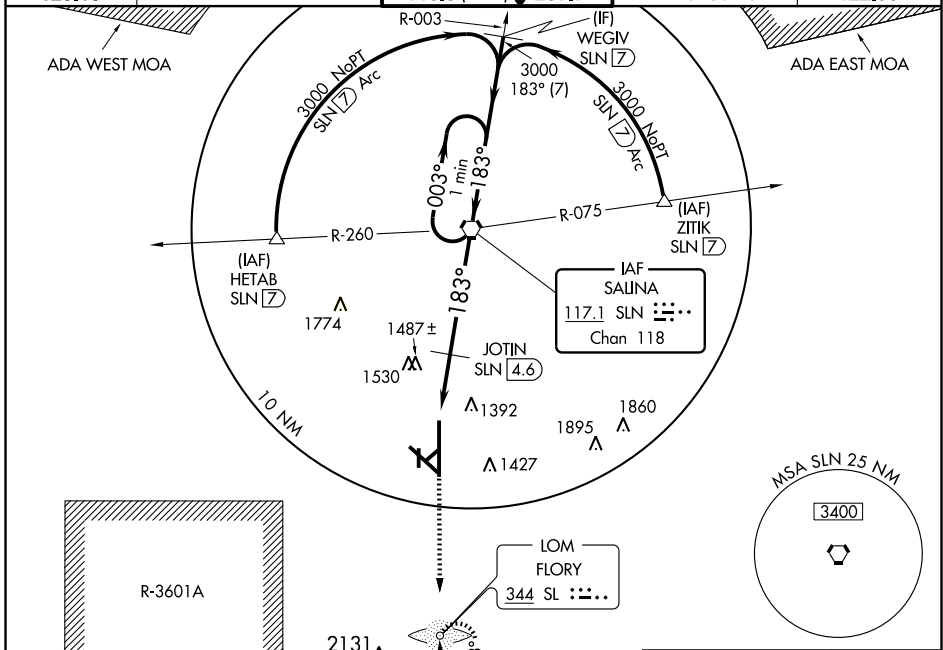
⚠ Inoperative table does not apply to Cat C/D/E. Circling NA for Cat D/E southwest of Rwy 12-30. ADF required. When local altimeter setting not received, use McPherson altimeter setting and increase all MDA 100 feet and Cat C/D/E visibility ¼ mile and increase JOTIN fix minimums S-17 Cat C/D visibility ¼ mile, Cat E visibility ½ mile, circling Cat C/E visibility ¼ mile. VDP NA when using McPherson altimeter setting.

MALS



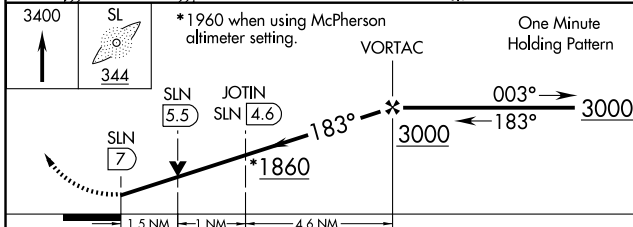
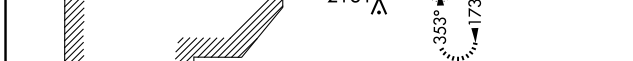
MISSED APPROACH:
Climb to 3400 direct SL LOM and hold.

ATIS 120.15	KANSAS CITY CENTER 134.9 363.2	SALINA TOWER * 119.3 (CTAF) 0 257.7	GND CON 121.9 397.9	UNICOM 122.95
-----------------------	--	---	-------------------------------	-------------------------



NC-2, 22 OCT 2009 to 19 NOV 2009

NC-2, 22 OCT 2009 to 19 NOV 2009



CATEGORY	A	B	C	D	E
S-17	1860-¾ 614 (600-¾)		1860-1¾ 614 (600-1¾)	1860-2 614 (600-2)	1860-2½ 614 (600-2½)
CIRCLING	1860-1 572 (600-1)		1860-1¾ 572 (600-1¾)	1860-2 572 (600-2)	1920-2½ 632 (700-2½)
JOTIN FIX MINIMUMS					
S-17	1760-¾ 514 (500-¾)		1760-1½ 514 (500-1½)	1760-1¾ 514 (500-1¾)	
CIRCLING	1820-1 532 (600-1)		1840-1½ 552 (600-1½)	1840-2 552 (600-2)	1920-2½ 632 (700-2½)

