

# RNAV (GPS) RWY 35

SALINA MUNI (SLN)

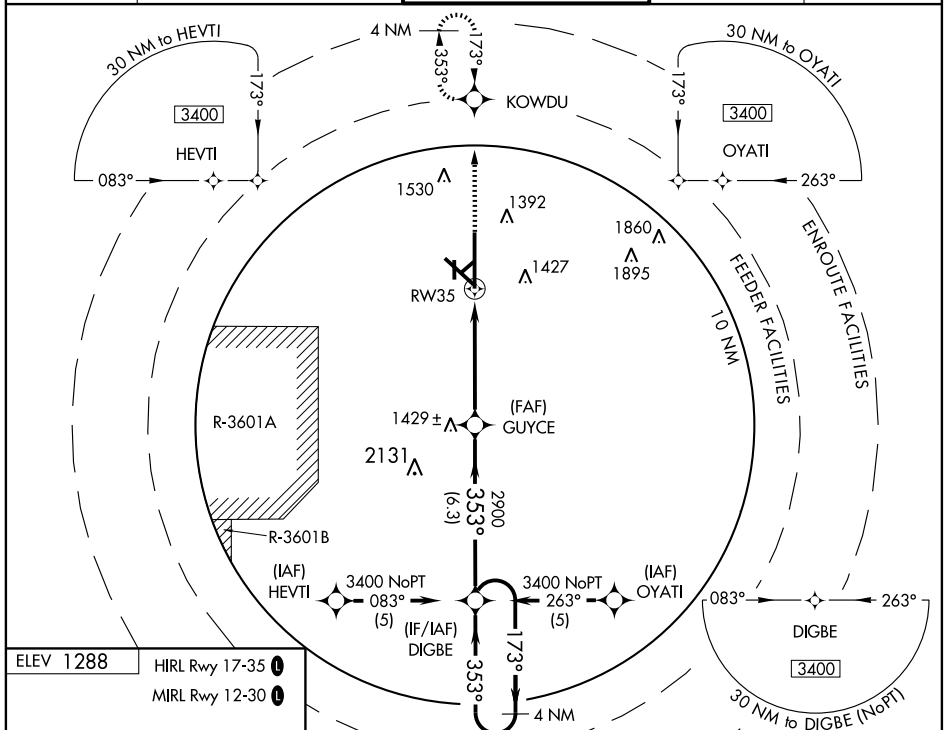
WAAS CH <b>77522</b> <b>W35A</b>	APP CRS <b>353°</b>	Rwy Idg <b>12300</b> TDZE <b>1271</b> Apt Elev <b>1288</b>
--	------------------------	--

**▼** DME/DME RNP-0.3 NA. BARO-VNAV NA below -17°C (2°F).  
 Circling NA for Cat D southwest of Rwy 12-30. For inoperative MALSR, increase LNAV Cat D visibility to 1¼ and LPV visibility all CATs to ¾.



MISSED APPROACH: Climb to 3400  
direct KOWDU and hold.

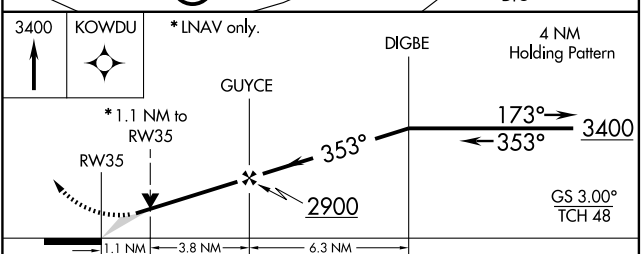
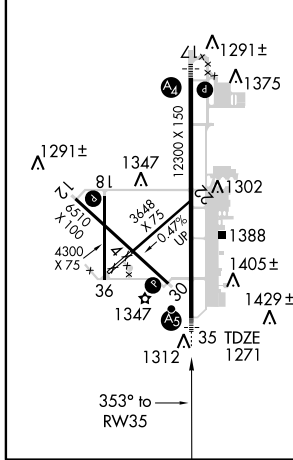
ATIS <b>120.15</b>	KANSAS CITY CENTER <b>134.9 363.2</b>	SALINA TOWER * <b>119.3 (CTAF) 257.7</b>	GND CON <b>121.9 397.9</b>	UNICOM <b>122.95</b>
-----------------------	--	---	-------------------------------	-------------------------



NC-2, 22 OCT 2009 to 19 NOV 2009

NC-2, 22 OCT 2009 to 19 NOV 2009

ELEV 1288	HIRL Rwy 17-35
	MIRL Rwy 12-30



CATEGORY	A	B	C	D
LPV DA		1521-½	250 (300-½)	
LNAV/VNAV DA		1623-¾	352 (400-¾)	
LNAV MDA	1680-½	409 (400-½)	1680-¾ 409 (400-¾)	1680-1 409 (400-1)
CIRCLING	1820-1¼	532 (600-1¼)	1840-1½ 552 (600-1½)	1840-2 552 (600-2)