

SALINA, KANSAS

AL-362 (FAA)

RNAV (GPS) RWY 30

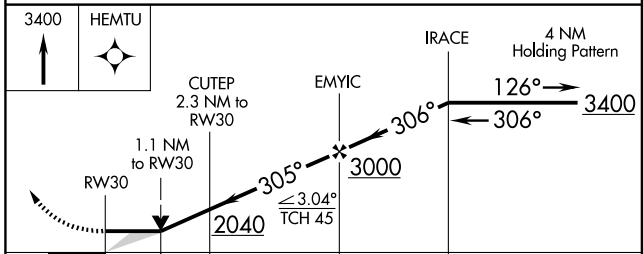
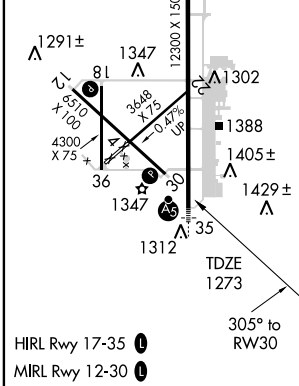
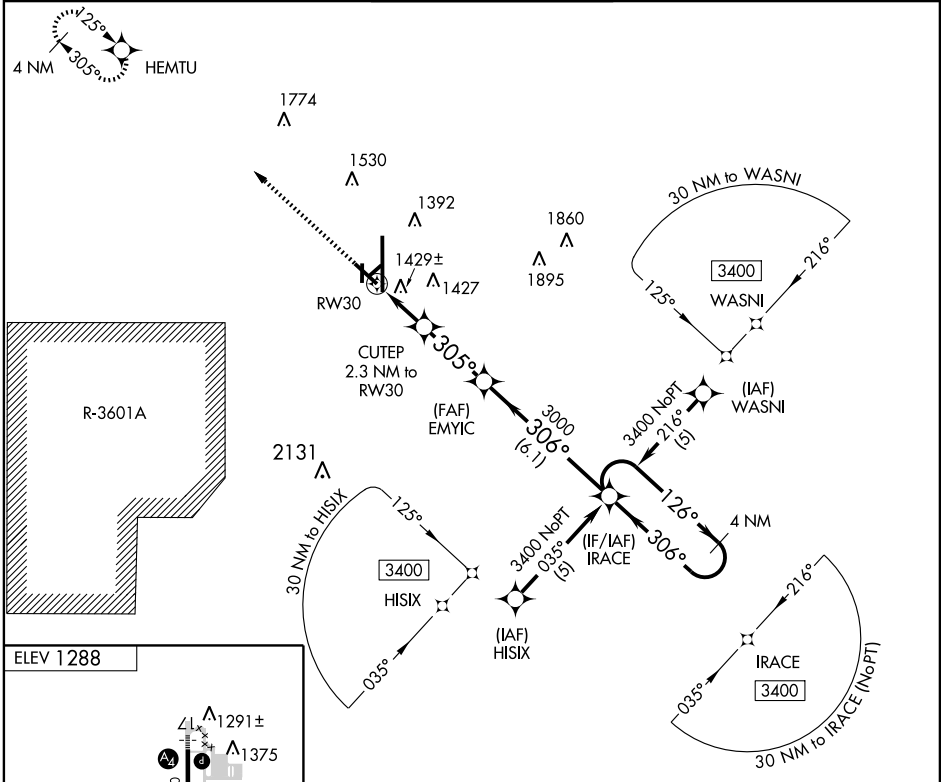
SALINA MUNI (SLN)

APP CRS 305°	Rwy Idg 6510
	TDZE 1273
	Apt Elev 1288

▼ Circling NA for Cat D southwest of runway 12-30. DME/DME RNP-0.3 NA. When local altimeter setting not received, use McPherson altimeter setting and increase all MDA 100 feet and LNAV
▲ Cat C / D and circling Cat C visibility ¼ mile. VDP NA when using McPherson altimeter setting.

MISSED APPROACH:
Climb to 3400 direct HEMTU and hold.

ATIS 120.15	KANSAS CITY CENTER 134.9 363.2	SALINA TOWER * 119.3 (CTAF) 0 257.7	GND CON 121.9 397.9	UNICOM 122.95
-----------------------	--	---	-------------------------------	-------------------------



CATEGORY	A	B	C	D
LNAV MDA	1680-1	407 (400-1)	1680-1½	407 (400-1½)
CIRCLING	1820-1	532 (600-1)	1840-1½	552 (600-1½)
			1840-2	552 (600-2)

SALINA, KANSAS
Orig 08325

38° 47' N-97° 39' W

RNAV (GPS) RWY 30

NC-2, 22 OCT 2009 to 19 NOV 2009

NC-2, 22 OCT 2009 to 19 NOV 2009