

SALINA, KANSAS

AL-362 (FAA)

# ILS or LOC RWY 35

SALINA MUNI (SLN)

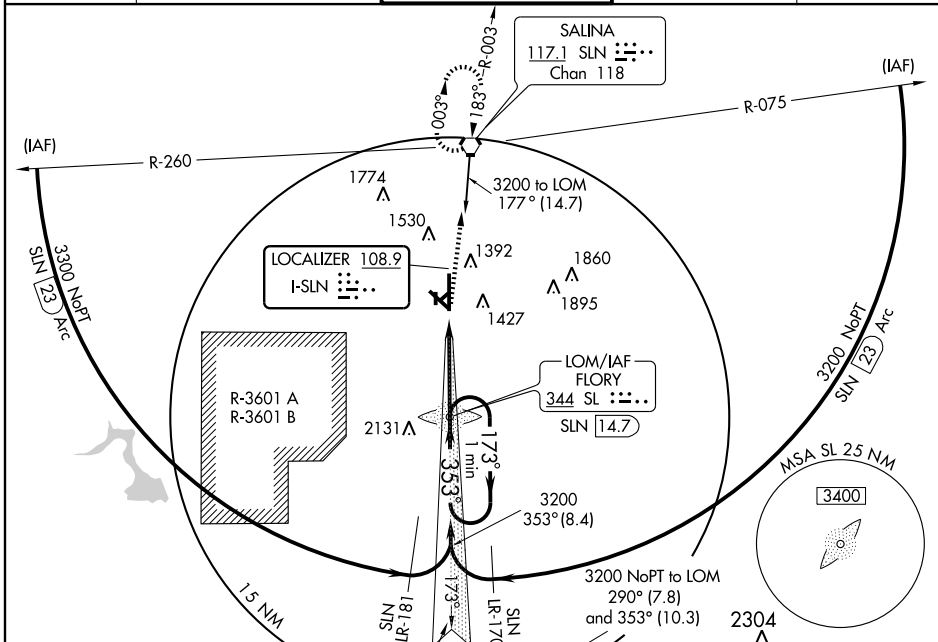
LOC I-SLN	APP CRS	Rwy Idg	<b>12300</b>
<b>108.9</b>	<b>353°</b>	TDZE	<b>1271</b>
		Apt Elev	<b>1288</b>

**▼** Cat D and E circling NA southwest or Rwy 12-30.  
**▲** For inoperative MALSR, increase S-LOC 35 Cat D visibility to 1½ miles and Cat E to 1½ mile.



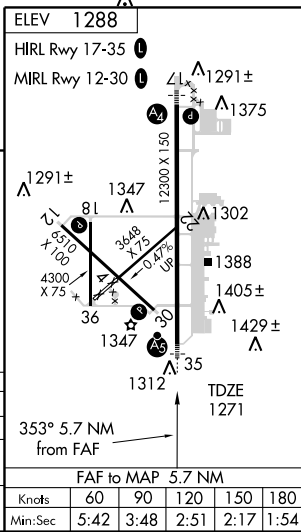
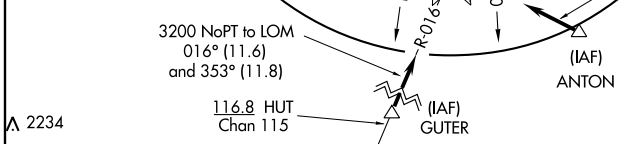
MISSED APPROACH: Climb to 3000 direct SLN VORTAC and hold.

ATIS	KANSAS CITY CENTER	SALINA TOWER ★	GND CON	UNICOM
<b>120.15</b>	<b>134.9 363.2</b>	<b>119.3 (CTAF) 0 257.7</b>	<b>121.9 397.9</b>	<b>122.95</b>



NC-2, 22 OCT 2009 to 19 NOV 2009

NC-2, 22 OCT 2009 to 19 NOV 2009



3000	SLN			
↑	117.1			
		FLORY LOM	One Minute	
		SLN 14.7	Holding Pattern	
		3166	173°	3200
			← 353°	
			3200	GS 3.00°
				TCH 48
				5.7 NM

CATEGORY	A	B	C	D	E
S-ILS 35			1471-½	200 (200-½)	
S-LOC 35	1680-½	409 (500-½)	1680-¾ 409 (500-¾)	1680-1	409 (500-1)
CIRCLING	1820-1	532 (600-1)	1840-1½ 552 (600-1½)	1840-2	552 (600-2)

SALINA, KANSAS  
 Amdt 19A 08325

38° 47' N-97° 39' W

# ILS or LOC RWY 35

SALINA MUNI (SLN)