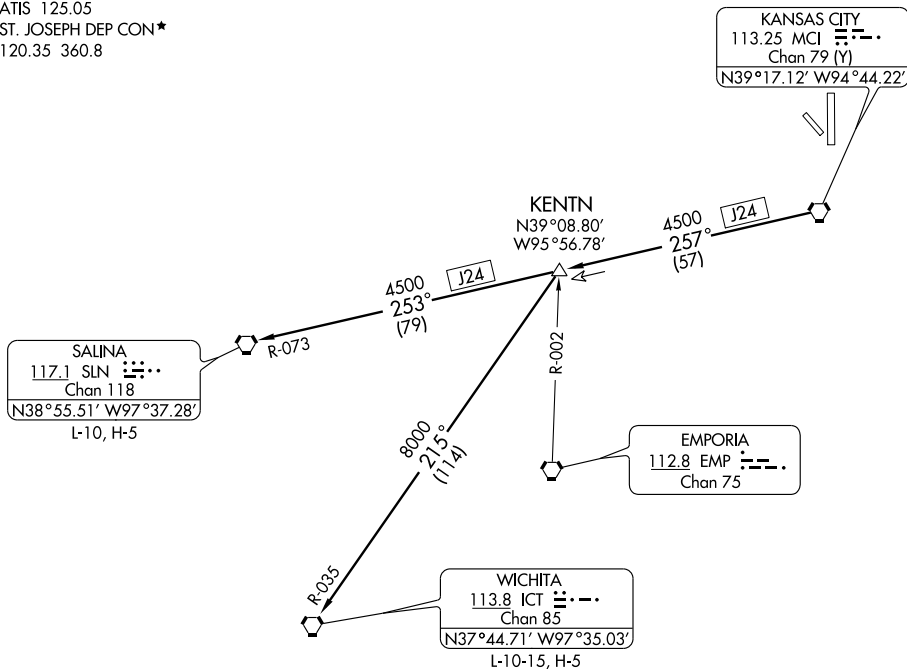


ATIS 125.05
ST. JOSEPH DEP CON ★
120.35 360.8



NC-3, 22 OCT 2009 to 19 NOV 2009

NC-3, 22 OCT 2009 to 19 NOV 2009

NOTE: Chart not to scale

DEPARTURE ROUTE DESCRIPTION

Fly assigned heading and altitude for vector to appropriate route. Expect filed altitude 10 minutes after departure.

KENTN TRANSITION (WLDCT2.KENTN): From over MCI VORTAC via MCI R-257 to KENTN INT.

SALINA TRANSITION (WLDCT2.SLN): From over MCI VORTAC via MCI R-257 and SLN R-073 to SLN VORTAC.

WICHITA TRANSITION (WLDCT2.ICT): From over MCI VORTAC via MCI R-257 to KENTN INT, then via ICT R-035 to ICT VORTAC.