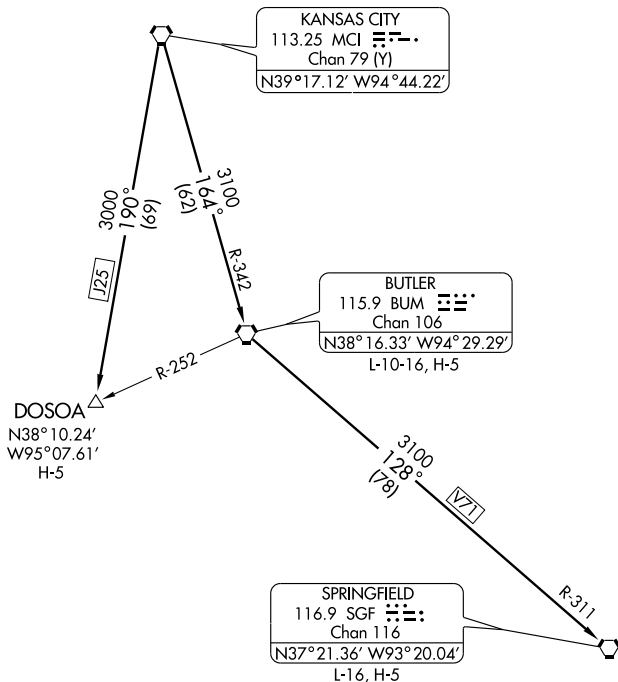


ATIS 125.05
ST. JOSEPH DEP CON *
120.35 360.8



NOTE: Chart not to scale

DEPARTURE ROUTE DESCRIPTION

Fly assigned heading and altitude for vector to appropriate route. Expect filed altitude 10 minutes after departure.

BUTLER TRANSITION (RACER3.BUM): From over MCI VORTAC via MCI R-164 and BUM R-342 to BUM VORTAC.

DOSOA TRANSITION (RACER3.DOSOA): From over MCI VORTAC via MCI R-190 to DOSOA INT.

SPRINGFIELD TRANSITION (RACER3.SGF): From over MCI VORTAC via MCI R-164 and BUM R-342 to BUM VORTAC, then via BUM R-128 and SGF R-311 to SGF VORTAC.