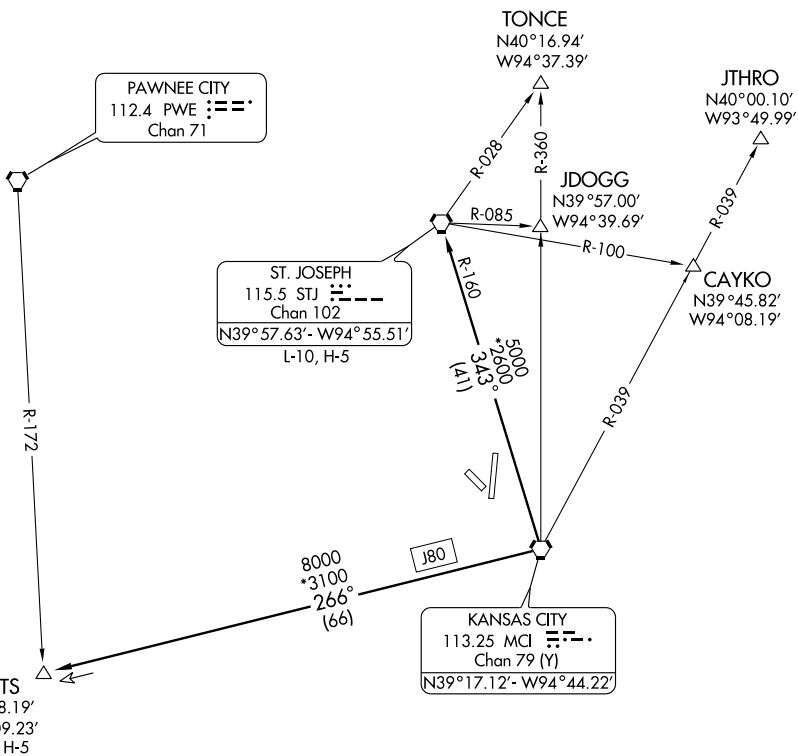


# CHIEF THREE DEPARTURE

ATIS 125.05  
ST. JOSEPH DEP CON \*  
120.35 360.8

NC-3, 22 OCT 2009 to 19 NOV 2009



NC-3, 22 OCT 2009 to 19 NOV 2009



## DEPARTURE ROUTE DESCRIPTION

Fly assigned heading and altitude for vector to appropriate route. Expect filed altitude 10 minutes after departure.

CATTS TRANSITION (CHIEF3.CATTS): From over MCI VORTAC via MCI R-266 to CATTS INT.

ST. JOSEPH TRANSITION (CHIEF3.STJ): From over MCI VORTAC via MCI R-343 and STJ R-160 to STJ VORTAC.