

VORTAC SAC	APP CRS	Rwy Idg	5503
115.2	016°	TDZE	21
Chan 99		Apt Elev	24

VOR RWY 2

SACRAMENTO EXECUTIVE (SAC)

▼ For inoperative MALSRL, increase S-2 Cats A, B visibility to 1 mile. Visibility reduction by helicopters NA.

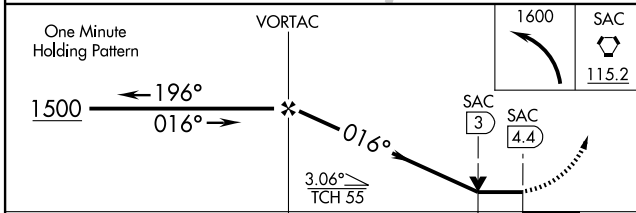
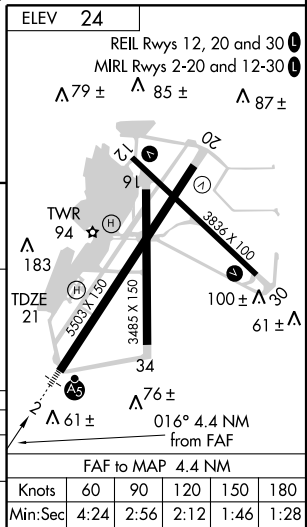
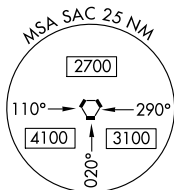
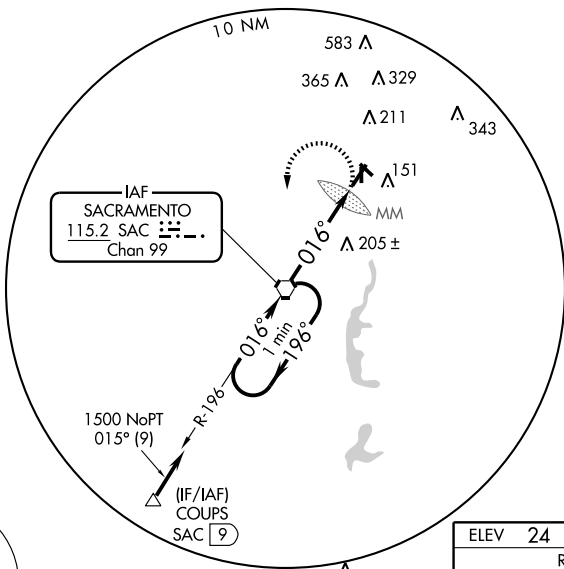
▲ When local altimeter setting not received, use Sacramento Intl altimeter setting and increase all MDA 40 feet and S-2 Cats C, D visibilities ¼ mile. VDP NA when using Sacramento Intl altimeter setting.



MISSED APPROACH: Climbing left turn to 1600 direct SAC VORTAC and hold.

ATIS 125.5	NORCAL APP CON 125.25 257.9 (SE-NW)	EXEC TOWER ★ 119.5 (CTAF) 278.8	GND CON 125.0	UNICOM 122.95
----------------------	---	---	-------------------------	-------------------------

SW-2, 22 OCT 2009 to 19 NOV 2009



CATEGORY	A	B	C	D
S-2	520-¾ 499 (500-¾)			520-1 499 (500-1)
CIRCLING	520-1 496 (500-1)		520-1½ 496 (500-1½)	580-2 556 (600-2)

FAF to MAP 4.4 NM					
Knots	60	90	120	150	180
Min:Sec	4:24	2:56	2:12	1:46	1:28

SW-2, 22 OCT 2009 to 19 NOV 2009