


WAAS CH 62810 W02A	APP CRS 019°	Rwy Idg 5503 TDZE 21 Apt Elev 24
--	------------------------	---

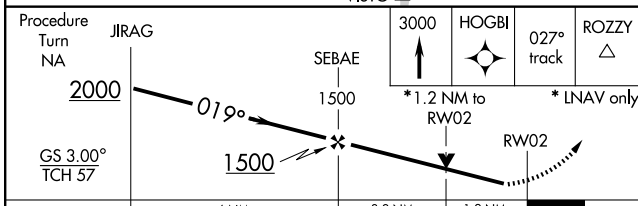
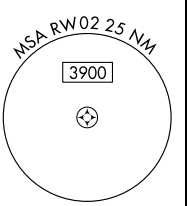
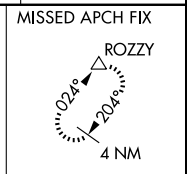
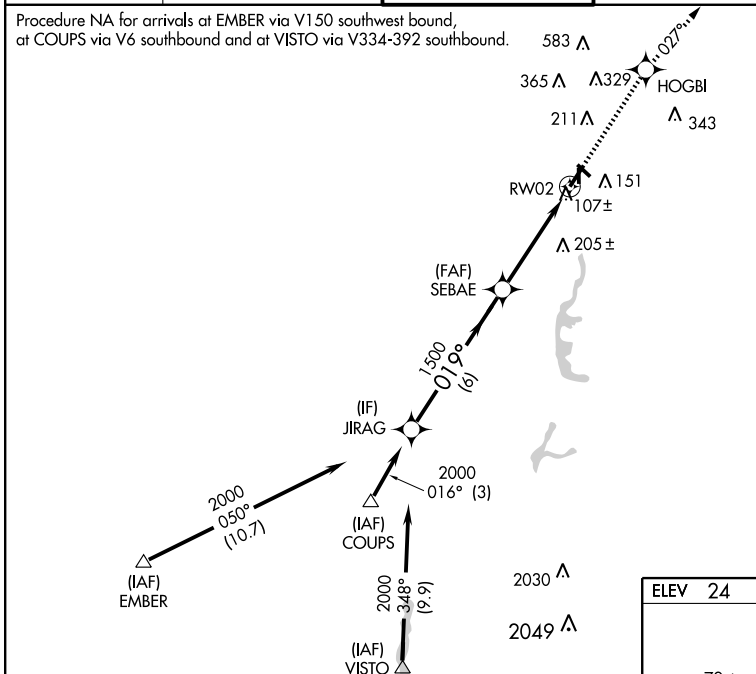
RNAV (GPS) RWY 2

SACRAMENTO EXECUTIVE (SAC)

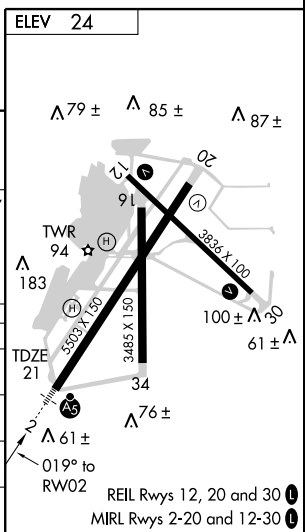
⚠ For inoperative MALSR, when using local altimeter setting, increase LNAV Cats A, B visibility to 1 mile and Cat D to 1½. For uncompensated Baro-VNAV systems, LNAV/VNAV NA below -1.5°C (5°F) or above 48°C (118°F). Inoperative table does not apply to LPV. DME/DME RNP -0.3 NA. Visibility reduction by helicopters NA. When local altimeter setting not received, use Sacramento Intl altimeter setting and increase all DA/MDA 40 feet. VDP and Baro-VNAV NA when using Sacramento Intl altimeter setting.

MALSR

MISSED APPROACH: Climb to 3000 direct HOGBI and via 027° track to ROZZY and hold.

ATIS 125.5	NORCAL APP CON 125.25 257.9 (SE-NW)	EXEC TOWER * 119.5 (CTAF) 278.8	GND CON 125.0	UNICOM 122.95
----------------------	---	--	-------------------------	-------------------------



CATEGORY	A	B	C	D
LPV DA		221-¾	200 (200-¾)	
LNAV/VNAV DA		373-¾	352 (400-¾)	
LNAV MDA	440-¾	419 (500-¾)		440-1 419 (500-1)
CIRCLING	500-1 476 (500-1)	520-1 496 (500-1)	520-1½ 496 (500-1½)	580-2 556 (600-2)



SW-2, 22 OCT 2009 to 19 NOV 2009

SW-2, 22 OCT 2009 to 19 NOV 2009