


ILS or LOC RWY 2

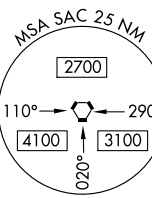
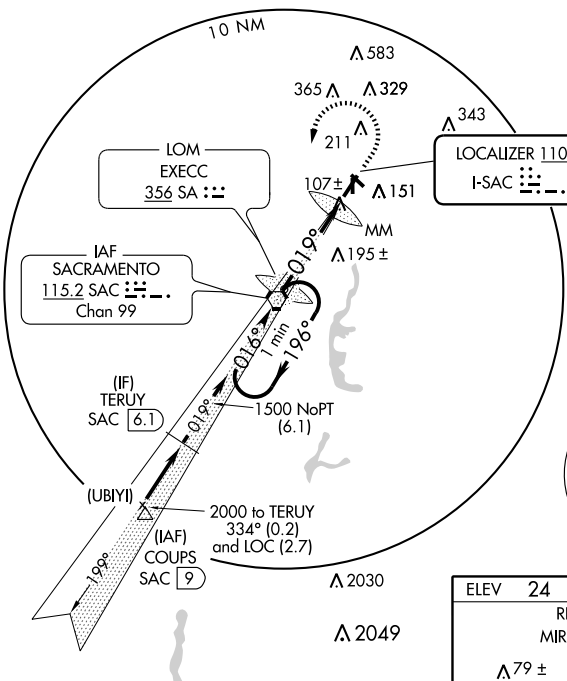
SACRAMENTO EXECUTIVE (SAC)

LOC I-SAC 110.3	APP CRS 019°	Rwy Idg TDZE Apt Elev	5503 21 24
---------------------------	------------------------	-----------------------------	---------------------------------------

▼ For inoperative MALS, when using local altimeter setting, increase S-LOC 2 all Cats visibility to 1 mile, when using Sacramento Intl altimeter setting increase S-LOC 2 Cat D visibility to 1½ mile. Inoperative table does not apply to S-ILS 2. Visibility reduction by helicopters NA. When local altimeter setting not received, use Sacramento Intl altimeter setting and increase all DA/MDA 40 feet.

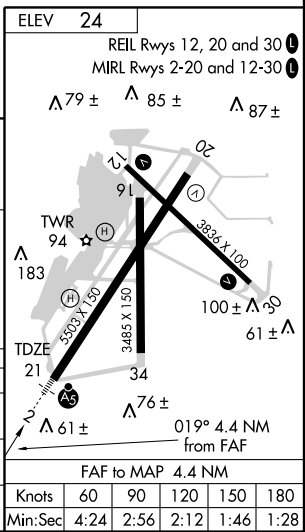
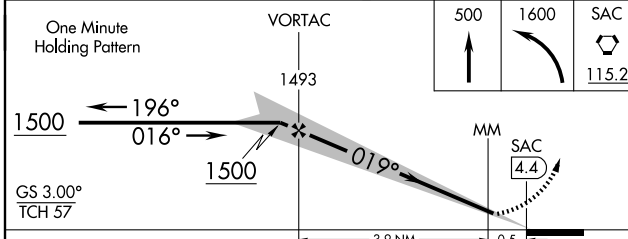
MALS

MISSED APPROACH: Climb to 500, then climbing left turn to 1600 direct SAC VORTAC and hold.

ATIS 125.5	NORCAL APP CON 125.25 257.9 (SE-NW)	EXEC TOWER * 119.5 (CTAF) 278.8	GND CON 125.0	UNICOM 122.95
----------------------	-----------------------------------------------	--------------------------------------------------	-------------------------	-------------------------



SW-2, 22 OCT 2009 to 19 NOV 2009

SW-2, 22 OCT 2009 to 19 NOV 2009



CATEGORY	A	B	C	D
S-ILS 2		221-¾	200 (200-¾)	
S-LOC 2		360-¾	339 (400-¾)	
CIRCLING	500-1 476 (500-1)	520-1 496 (500-1)	520-1½ 496 (500-1½)	580-2 556 (600-2)