

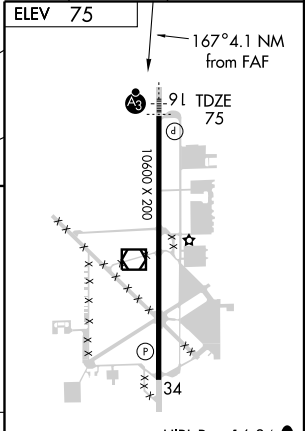
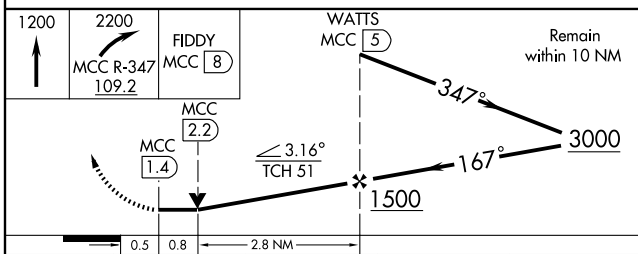
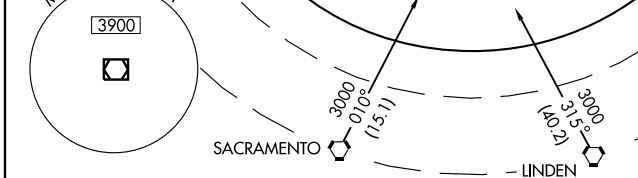
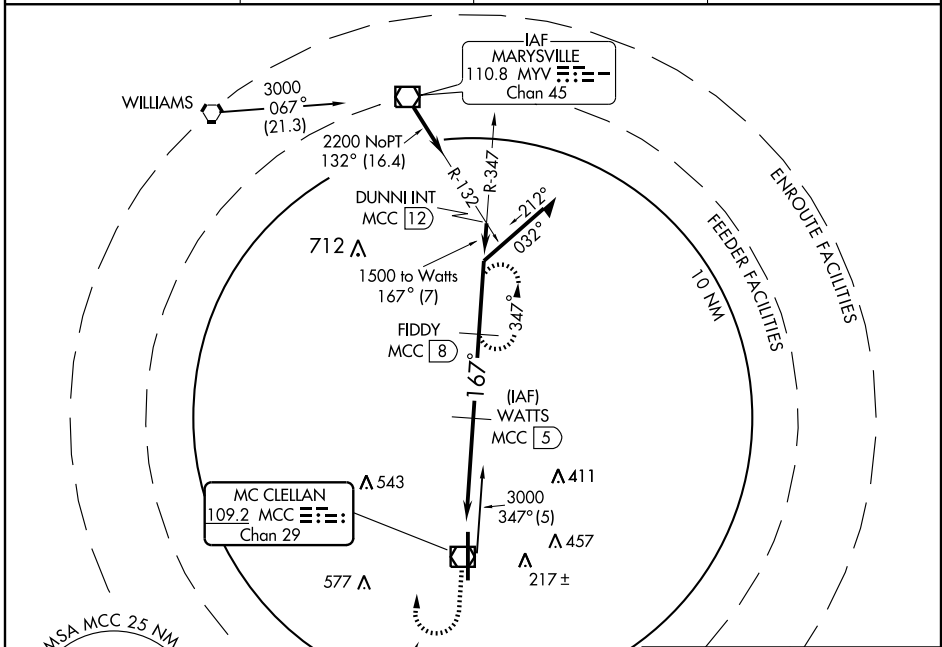
VOR/DME MCC	APP CRS	Rwy Idg	10600
109.2	167°	TDZE	75
Chan 29		Apt Elev	75

VOR/DME RWY 16

SACRAMENTO/MC CLELLAN AIRFIELD (MCC)

NA	If local altimeter setting not received, use Sacramento Intl altimeter setting and increase all MDAs 40 feet. VDP not authorized with Sacramento Intl altimeter setting.	SSALR	MISSED APPROACH: Climb to 1200 then climbing right turn to 2200 via MCC R-347 to FIDDY/8 DME and hold.
-----------	--	-------	--

AWOS-3 125.975	NORCAL APP CON 127.4 317.5	CLNC DEL 119.825	UNICOM 122.975 (CTAF)
--------------------------	--------------------------------------	----------------------------	---------------------------------



CATEGORY	A	B	C	D
S-16	540/24	465 (500-½)	540/40 465 (500-¾)	540/50 465 (500-1)
CIRCLING	NA			

Knots	60	90	120	150	180
Min:Sec					

SW-2, 22 OCT 2009 to 19 NOV 2009

SW-2, 22 OCT 2009 to 19 NOV 2009